

FasTrax® FR LD Cold Storage Doors

Combining the unique Thermal-Flex Sealing System with the InsulMax R-4 curtain provides an innovative, energy-efficient high performance cold storage door. The choice is easy.

Simple design and easy choice for almost any opening

Available with a standard lift, high lift, full vertical, wrapback and custom configurations, FasTrax FR LD fits almost any opening with fewer costly building modifications.

Reinventing the wheel

The heart of every FasTrax door, the drive system powers the door up and down without the need for counterweights, springs or pulleys.

Maximum uptime, minimum maintenance

Fewer moving parts means reliable, trouble-free performance and low lifetime ownership cost.

Highest operating speeds

Operating speeds up to 2.5 m/sec allows fast cycle times that increase productivity and maximize energy savings.

Communication

Rite-Hite Doors has a series of light communication products to help reduce common collision accidents between forklifts and pedestrians. LED Countdown, LED Pre-Announce and LED Virtual Vision available.

TRUE Auto Re-feed™

After an accidental impact, the FasTrax FR LD door re-feeds itself on the fly without human intervention, keeping your freezer door closed and downtime to a minimum.

Maximum safety

Thanks to Soft Breakaway™ Technology, two thru-beam photo eyes and optional VirtualVision, motion sensors and nonpowered opening.

Superior full-perimeter seal

Reduces the need for heat lamps and air curtains which can be costly to operate.



InsulMax curtain



Graphic User Interface (GUI)



LED Countdown

Specifications

Speed

Up to 2.5 m/sec with standard variable frequency drive. Top speed is dependent on door size.

Size

Minimum – 915 mm (W) x 2500 mm (H)
Maximum – 3050 mm (W) x 5000 mm (H)

With Wrapback option:

Minimum – 915 mm (W) x 3000 mm (H)
Maximum – 3050 mm (W) x 5500 mm (H)

Curtain material

InsulMax – 25 mm of polyester insulation placed between two layers of 30 oz. (1020 g/m²) urethane.

Side frames

Powder-coated aluminum extrusion, 107 mm x 120 mm projection.

Drive system

1.5 kW motor, variable frequency drive, cushioned motor mounts, drive gear, drive spheres and a composite-edge material which is attached to the curtain.

Electrical requirements

Three-phase: 400V

Graphic User Interface (GUI)

7" (178 mm) LCD touch screen interface that provides increased safety by allowing an individual to simply access the control box settings without wearing the necessary PPE often required for accessing a live electrical panel.

Control box

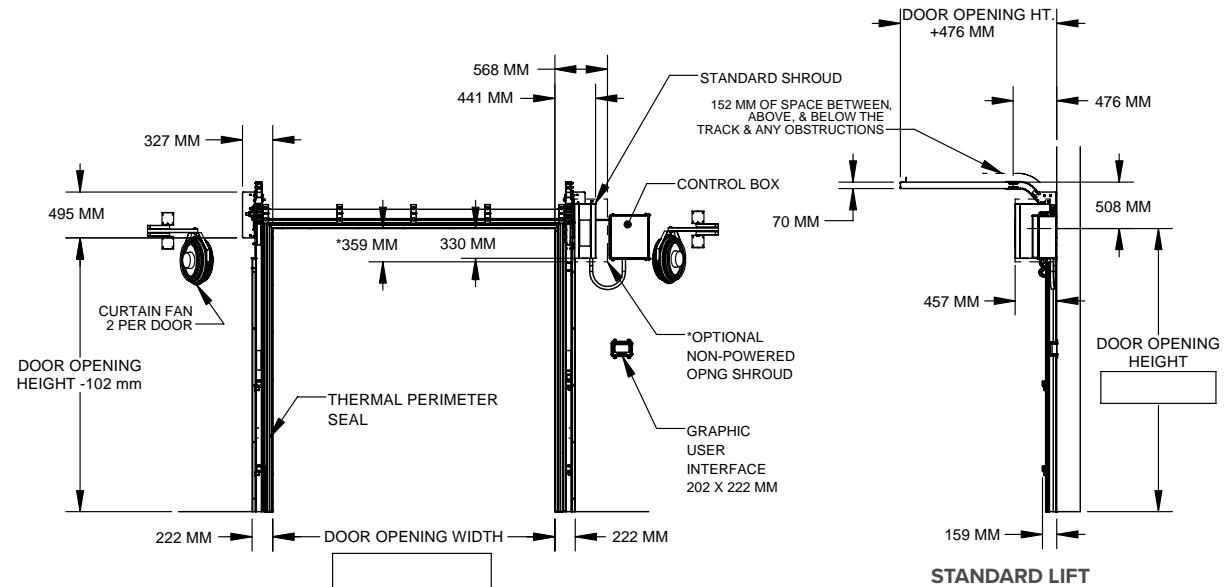
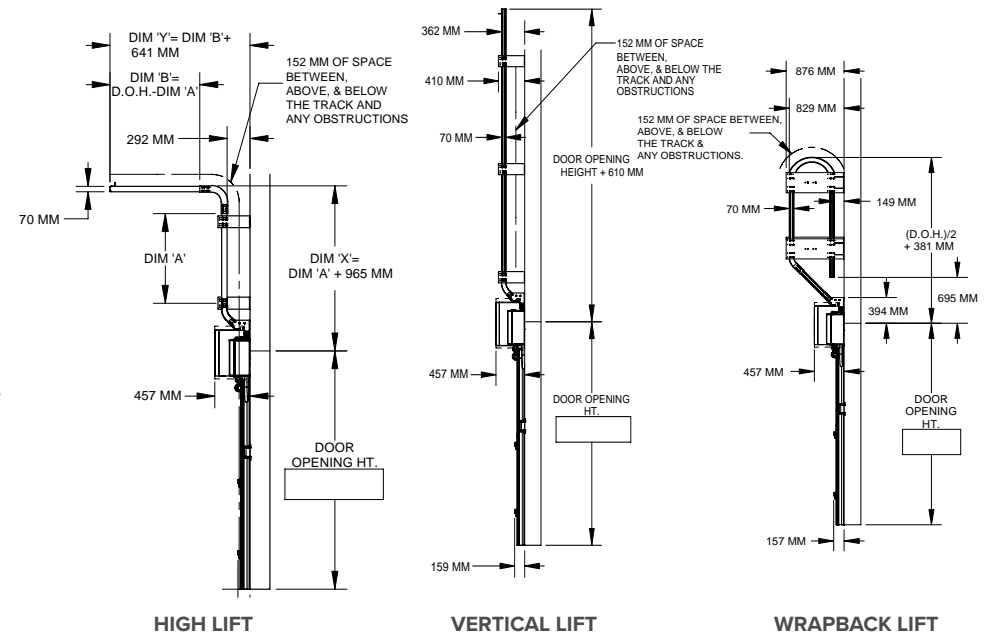
The i-COMM™ III Digital Controller has variable frequency drive. The IP66 box is prewired with external connections brought into pre-coded terminals.

Curtain retention

Wear-resistant Lexan wind guides keep tension on the curtain the entire length of the side frame. Standard wind pressure of 40 km/h. Includes TRUE Auto Re-feed™ system in case of accidental impacts to curtain.

Safety features

Soft-Edge™ Technology, two thru-beam photo eyes mounted at 255 mm and 1370 mm off the floor (or light curtain if DOH is ≥ 2700 mm).



Rite-Hite GmbH
 Carl-Zeiss-Str. 3
 34471 Volkmarshen
 Germany
 Tel. +49 5693 9870-0
 Fax +49 5693 9870-20

Rite-Hite UK
 Unit 2, D2 Trading Estate
 Castle Road
 Sittingbourne ME10 3RH, United Kingdom
 Tel. +44 1908 365082
 Fax +44 1908 645564

Rite-Hite®, FasTrax®, Thermal Air®, TRUE Auto Re-feed® and Soft-Edge® are trademarks of the Rite-Hite Holding Corporation. Rite-Hite products are covered by one or more U.S. Patents with other U.S. and foreign patents pending. The information herein is provided as a general reference only regarding the use of the applicable products. The specifications stated here are subject to change.