

Where's the Beef?

The demand for red meat is holding on despite shifting consumers and sky-high prices.

COVER
STORY
16

08

Regulatory Outlook
Under the Next Trump
Administration

14

GCCA Advocacy
in Brazil: Notable
Advancements Yet
Challenges Persist

18

2024 Winners Announced!

The Magnificent Seven:
CEBA Built By The Best
Final Review

22

The Market
Experts' Roundup

26

Be There In 2025:
GCCA Events Schedule





Providing Moisture Control Solutions for over 60 Years

Long known for its weatherproof cladding and vapor barriers, Polyguard now offers superior insulation systems (including protection from CUI) targeting below ambient and chilled water applications and a complete line of pipe supports and tools from Buckaroos.

• Weatherproof Jacketing • CUI protection • Vapor Barriers • Insulation • Pipe Supports



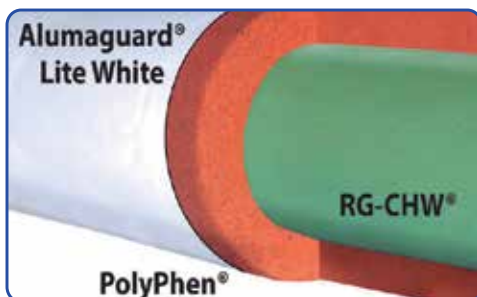
Alumaguard®



RG-2400®



Styrofoam XPS®



PolyPhen®



Insulrap / ZeroPerm®



Pipe Supports®

The DuPont™ logo is a registered trademark and STYROFOAM is a trademark of DuPont™ or an affiliated company of DuPont.



214-515-5000

www.polyguard.com/mechanical



800-969-3113

www.buckaroos.com

Buckaroos is now a Polyguard Company

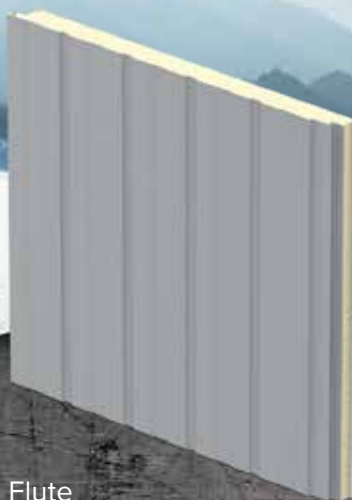


/// STRENGTH TO BUILD ON

PEAK PERFORMANCE



Light Mesa



Flute



Partition

When it comes to cold storage, Metl-Span® has been freezing out the competition for more than 50 years.

The ideal solution for controlled environments, including freezer, food processing, and dry goods warehouses, Metl-Span IMP's ensure that products remain in peak condition in any climate.



Visit metlspan.com to see the full lineup



DEPARTMENTS

- 29 Cold Chain Development
- 33 Cool Solutions
- 36 Member News
- 38 Association News
- 40 New Members
- 42 Ad Index

COLUMNS

- 06 Leadoff



About the Cover

Dive into the current and future state of the beef protein market on page 16

FEATURES

08

Regulatory Outlook Under the Next Trump Administration

An analysis of the policy and regulatory impact on key agencies important to the cold chain industry.

By Lowell Randel and Kerri Marbut

14

GCCA Advocacy in Brazil: Notable Advancements Yet Challenges Persist

Overcoming regulatory hurdles in Brazil's cold chain logistics.

By Isabela Perazza

16

Where's the Beef?

The demand for red meat is holding on despite shifting consumers and sky-high prices.

By Alexandra Walsh

18

The Magnificent Seven CEBA Built By The Best Final Review

2024 Winners Announced!

Meet the finalists for the 2024 CEBA Built By The Best Award.

By Keith Loria

22

The Market Experts' Roundup

Experts join us at our events throughout the year – here are some of the highlights shared at various events through the second half of 2024.

26

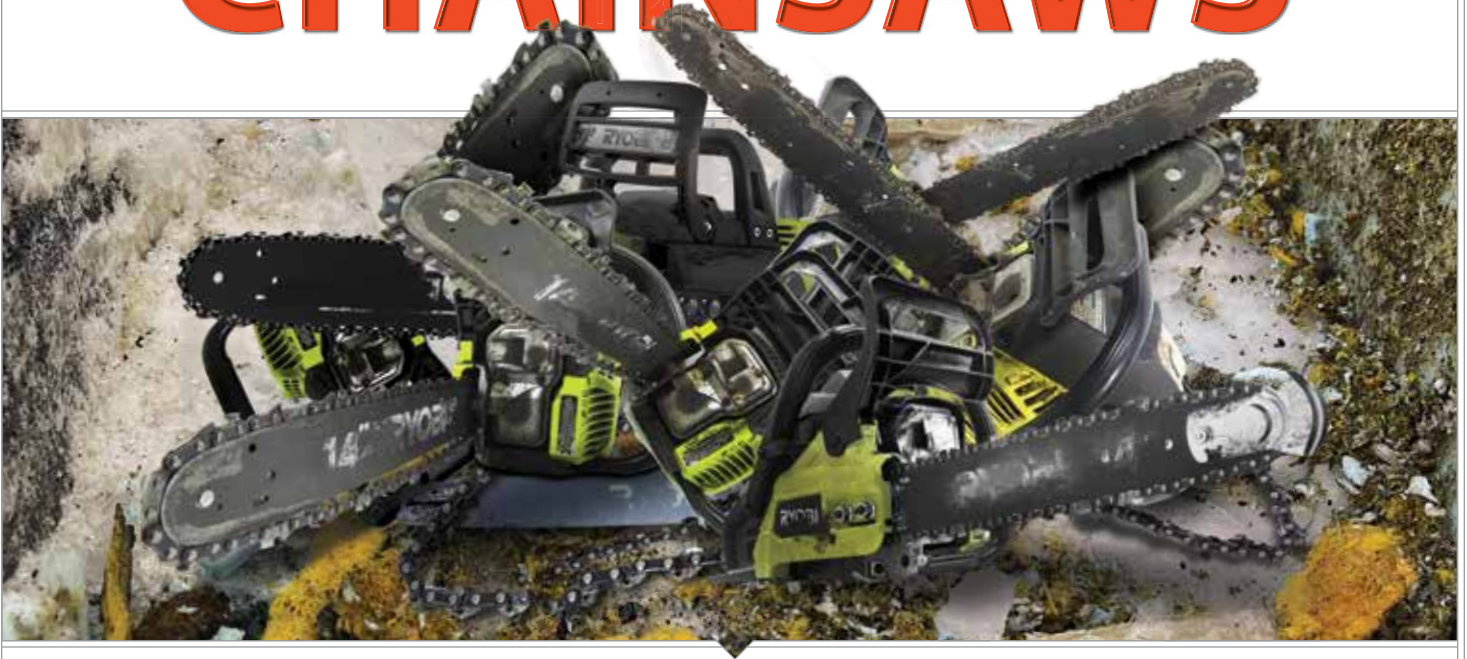
Be There In 2025: GCCA Events Schedule

The must-attend GCCA, GCCF and CEBA events taking place across the world in 2025.





SAVE OUR CHAINSaws



**CHAINSaws "LIVE", ON AVERAGE, 10 YEARS. ON THIS JOB,
EACH CHAINSaw LASTED ONLY 200 LINEAR FEET ...**

Over the duration of a recent 2000 lineal foot Vapor Armour Installation, roof ice buildup as thick as 2 feet required chainsaw after chainsaw to eradicate it from continual insulation and roof membrane contamination. The resulting aftermath was a pile of seized motors, worthless chains, and malfunctioning engines amongst a pile of 10 dead electric chainsaws.

The good news is you can avoid this unnecessary situation! With our FREE Forensic Evaluation, we can help find your facility's vapor barrier issues before frost becomes chainsaw-threatening ice. Then, install our patented Vapor Armour as your new facility is being built or retro-fit it into your existing cold storage warehouse. Either way, we back it all up with our unmatched 'No Ice. No Condensation. No Cost' 15-Year Warranty.

SAVE OUR CHAINSaws — SAVE YOUR BUILDING'S VAPOR BARRIER.



• TAKE ADVANTAGE OF OUR FREE FORENSIC EVALUATIONS •

VAPOR ARMOUR, INC. | 855.437.0446 | SALES@VAPORARMOUR.COM | VAPORARMOUR.COM

LEADOFF

MESSAGES FROM GCCA LEADERS

WELCOME TO THE LAST EDITION OF COLD FACTS FOR 2024 AND MY FIRST LEADOFF COLUMN. IT'S BEEN AN ABSOLUTE PLEASURE GETTING TO know so many GCCA, GCCF and CEBA members over the past few months as I settle into the role.

It's been an eventful year for the cold chain and your associations. It has been a year of elections and administration changes around the world. Culminating in the U.S. elections in November, most places have seen leadership changes, and this gives rise to opportunities and risks for a range of policies that impact the cold chain.

GCCA is uniquely placed to engage, interpret and influence these changes in key regulatory markets across the world. We are proud of the progress we have made. We are building the reputation and profile of the cold chain in key places like Washington, Ottawa, Brussels and Brasilia. We have more work to do to deepen and expand our reach and influence, but we are committed to that vital work.

We close out the year proud and optimistic about the performance of cold chain through a series of challenges that have faced the global cold chain, with increasing geopolitical tensions affecting global trade routes, major weather-related challenges to both supply chain facilities and agricultural production and general economic headwinds.

The main lesson is that high quality, professional and efficient cold chain is a vital part of the success of not just the businesses we serve but the wider economy. We dive into one of the key markets that we serve in our cover article on the prospects for the global protein market.

We have also delivered a great service to our members throughout the year. We had a record-breaking year for attendance and participation at our conferences, connections and virtual events. With so many highlights, it's impossible to list them all.

Check out the write ups of the Convention and CEBA Conference that took place in the past few weeks, but we should also give special mention to the first-ever CEBA Pro training event. This unique new program is the culmination of the work of many people over many years to deliver on the members' vision to provide a way to educate and recognize the unique knowledge and standards required to service the controlled environment building sector. Congratulations to our first group of CEBA professionals.

Please check out the article on our packed 2025 events schedule. It is a great way to start marking your calendar, but also to understand the thinking behind the events we run including major conferences, cold chain connections, policy forums and training events.

As we close out the year, we must express our gratitude to the outgoing board chairmen and prepare to welcome new executive committee leaders and board members to take up post at the beginning of January. These elections have been taking place in the past few weeks. We could not do what we do without our volunteer leaders.

Thanks to you all for your support for our associations this past year, and I look forward to getting to see many of you throughout a packed 2025. @



SARA STICKLER
GCCA PRESIDENT
AND CEO

COLDFACTS

COLD FACTS magazine is published every other month by the **Global Cold Chain Alliance (GCCA)**, an organization that unites partners to be innovative leaders in the temperature-controlled warehousing, transportation and logistics industry.



CONTACT US:

COLD FACTS Magazine
Global Cold Chain Alliance
Attn: Shane Brennan
241 18th Street South
Suite 620
Arlington, Virginia 22202
United States

tel +1 703 373 4300
sbrennan@gcca.org | www.gcca.org

COLD FACTS welcomes editorial ideas; contact Editor-In-Chief Alexandra Walsh at +1 301 523 3318 or awalsh@associationvision.com.

Contact Jeff Rhodes at +1 410 584 1994 or jeff.rhodes@wearemc.com for advertising opportunities in GCCA publications.

Design by SWALLIS Design, Dallas, Texas, USA.

While the material in this publication has been compiled with care, the Global Cold Chain Alliance (GCCA) has not validated all of the information contained herein and does not assume any responsibility for its use, accuracy, or applicability. As used above, GCCA shall mean the organization, GCCA Core Partners, and each organization's directors, officers, employees, volunteers, members, and agents.



For more information on GCCA initiatives and activities follow us on LinkedIn at: www.linkedin.com/company/global-cold-chain-alliance-gcca/



BRUCHA®

Cold Storage | Food Processing Plants | ASRS Facilities

BETTER

"BRUCHA panels will be manufactured when they say they will."

Alex Anthony, Sealand Building Group

- **ISO 14001 Certified**
- **16 Different Panel Thicknesses**
- **Poly-Iso and FR Mineral Wool Panels**

Learn more at bruchaamerica.com or contact:
Jeff Gerhardt, VP Sales, 720-938-5566, j.gerhardt@brucha.com

PANELS THAT CONNECT



REGULATORY OUTLOOK UNDER THE NEXT TRUMP ADMINISTRATION

An analysis of the policy and regulatory impact on key agencies important to the cold chain industry

By Lowell Randel and Kerri Marbut

The 2024 election delivered Donald Trump a victory in the Electoral College, along with Republican majorities (albeit by thin margins) in both the House and Senate. As the president-elect prepares to return to the White House, he is beginning to bring forward nominees for key government posts who may shed light on regulatory policies impacting the industrial refrigeration industry. There are also clues from his first term about how a Trump Administration will address regulations.

On the campaign trail, Trump talked about the need to address burdensome regulations. His platform, titled “Agenda 47,” also references over-regulation. The first point under Chapter Three of the platform states that, “Republicans will slash regulations that stifle jobs, freedom, innovation and make everything more expensive.” Deregulation was also a theme of Trump’s first term when he instituted policies to limit the growth in regulation such as requiring the removal of two regulations for every new regulation put in place. While it is unclear whether he will follow that same policy in his second term, it appears that tackling overly burdensome regulations will be on his agenda again in his second term.

A usual practice of all new administrations is to issue a directive to withdraw all pending regulations of the previous administration and to defer the effective dates of recently published regulations. The Trump Administration is also expected to rescind executive orders signed by Biden that are counter to Trump’s policy priorities. Rules completed late in the Biden term could also be subject to cancellation under the Congressional Review Act.

New to the second term will be an effort led by Elon Musk and Vivek Ramaswamy to establish a Department of Government Efficiency. Not many details are known as to how the new organization will operate, but both Musk and Ramaswamy have talked about the

need to evaluate and pare back the current regulatory framework.

Below is an analysis of the policy and regulatory outlook for key agencies impacting the cold chain industry.

OSHA

Under the previous Trump Administration, the Occupational Safety and Health Administration (OSHA) went the full term without a confirmed Assistant Secretary for OSHA. This appeared to limit major policy changes within the agency. However, the agency did shift toward less stringent regulatory actions and a greater focus on compliance assistance over punitive measures and high-profile press releases highlighting enforcement actions against employers. This approach is expected again in the next Trump Administration. It is also likely that recent Biden initiatives will be reviewed and possibly rolled-back.

There are a large number of pending or recently completed OSHA rulemakings that could be impacted by the Trump Administration:

- Changes to Process Safety Management remain on the agency’s regulatory agenda. However, much like during Trump’s first term, it is not expected that OSHA will move forward with the rulemaking process.

INTRODUCING THE NEW FROSTFLEX™ SYSTEM



PROVIDING A CONSISTENT
AND UNIFORM APPEARANCE



6 VERSATILE COMPONENTS

- ▶ 3 Jackets
- ▶ 2 Pants
- ▶ 1 Set of Bib Overalls

10°F
0°F
-20°F
-40°F
-60°F



FLEXIBLE
COMFORT
ACROSS
FIVE
TEMPERATURE
ZONES



ALL-IN-ONE PROTECTION

- ▶ Flexibility
- ▶ Multi-functional
- ▶ Cohesive Look

RefrigiWear®



Explore FrostFlex™ System at
Pro.RefrigiWear.com/FrostFlex

- President Trump may reconsider OSHA's "Worker Walkaround Representative Designation Process" rule, which allows some third-party representatives in inspections. The rule is also being challenged in the courts.
- The proposed "Heat Injury and Illness Prevention" rule, which has yet to be finalized, is not likely to move forward in its current form and could be scrapped in favor of guidance instead of regulation.
- The proposed "Emergency Response Standard" is still in the rulemaking process and could be shelved by the new administration, particularly given concerns about the rule's clarity and potential burden.
- The "Improve Tracking of Workplace Injuries and Illnesses" rule could also be revisited. The policy exemplifies regulatory shifts across recent administrations, impacting consistency in reporting requirements for employers and OSHA's policy direction.

Enforcement will continue as the new administration takes shape, but priorities will shift at the federal level. In response to some of these rollbacks and shifting priorities on the federal level, some states like California may intensify their enforcement efforts.

EPA

Trump has selected former Rep. Lee Zeldin from New York to lead the Environmental Protection Agency (EPA). Zeldin has indicated that deregulation will be a top priority for him as EPA Administrator. A substantial shift in the EPA's focus is expected, marked by decentralized regulatory power at the federal level, a pivot toward fossil fuels, and fewer initiatives focused on climate change and environmental justice. This approach could reduce regulatory costs for businesses and influence international efforts aimed at reducing global emissions. In the previous Trump Administration, the United States pulled out of the Paris Climate Agreement and there is potential to see similar withdrawals from international climate negotiations and commitments.

The Trump administration previously sought to reduce the EPA's budget by up to

30%, although Congress ultimately approved fewer cuts. Trump also froze hiring and aimed to reduce staff levels. Similar efforts are expected in his second term.

In his first term, Trump moved to reconsider Risk Management Program (RMP) changes finalized by the Obama Administration. It is possible that history will repeat itself with the recent RMP changes instituted by the Biden Administration. The latest RMP Rule, "Safer Communities by Chemical Accident Prevention," was finalized in February 2024, but the compliance date for most provisions is not until 2027. The new EPA leadership could consider additional rulemaking to revise or rescind the Biden-era RMP rule.

While it is widely expected that many climate policies will be rolled back under the Trump Administration, it is not clear how that will impact regulations under the American Innovation & Manufacturing (AIM) Act. The AIM Act passed with bipartisan support and also has support from industry. These factors may keep AIM Act policies off the list of high priority roll backs.

USDA

Trump has selected Brooke Rollins as his nominee for Secretary of Agriculture. Rollins is a native of Texas who grew up on a farm and was active in 4-H and Future Farmers of America (FFA). She has a degree in Agricultural Development from Texas A&M University. Rollins served in the first Trump Administration as Director of the Domestic Policy Council in the White House.

If confirmed, Rollins will be faced with a number of challenges and opportunities early in her tenure. With Congress unable to complete a Farm Bill this year, negotiations will be pushed to 2025. In addition, changes to trade policy could have a significant impact on food and agriculture. Trump has indicated his desire to institute additional tariffs on imported products to boost U.S. production and manufacturing.

When countries retaliate on tariffs to their products, U.S. food and agriculture is a usual target. This could impact export opportunities for some commodities. This was the case with tariffs during Trump's first term, which

triggered the administration to establish programs like the Market Facilitation Program to assist producers impacted by tariff retaliation. It is also expected that United States Department of Agriculture (USDA) will see a focus on deregulation and reduced emphasis on climate related programs.

FDA

Dr. Marty Makary has been announced as Trump's selection to lead the Food and Drug Administration (FDA). Makary is a medical doctor with limited experience in the food space, similar to most previous leaders of the agency. Under a second Trump presidency, key personnel changes could bring a more hands-off approach to regulation, as seen in previous years, with the possibility of rolling back certain rules or focusing on deregulation to reduce what is viewed as bureaucratic overreach.

Implementation of the FSMA 204 Rule on food traceability could be impacted by the new administration. The current compliance date for the rule is January 2026. However, industry (including GCCA) has been pushing both FDA and Congress to delay the compliance deadline and conduct pilot programs to evaluate compliance strategies for various parts of the food supply chain.

Trump has announced that he will nominate Robert F. Kennedy, Jr. (RFK Jr.) to serve as his Secretary of the Department of Health and Human Services (HHS). FDA falls under the HHS structure and RFK Jr. has indicated plans to address both food and drug policies under his "Make America Healthy Again" efforts. This could have implications for food industry practices including the use of certain chemicals and ingredients in food production.

Transportation

Sean Duffy, former congressman from Wisconsin, has been nominated for Transportation Secretary. The transportation industry can expect a continued focus on deregulation. In the trucking sector, there may be a rollback of certain environmental regulations, such as stricter emissions standards and electric vehicle mandates, which could reduce compliance costs for trucking companies.

KING of COLD



KS Shadowline

Our king-sized R-Values are the best in the industry

With an industry-leading R-Value of 9.0 per inch in controlled environments, Kingspan Insulated Panels with QuadCore® Technology are the most thermally efficient panels on the market.



Learn more at
KingofCold.kingspanpanels.us



Similarly, Trump may look to roll back rail regulations advanced by the Biden Administration. Additionally, Trump's tariff policies could encourage nearshoring and increase demand for domestic freight.

Trade

Jamieson Greer, who served as Chief of Staff for the United States Trade Representative (USTR) during the first Trump Administration, has been tapped for the role of Trade Representative.

Trump has been clear about his intentions to explore additional tariffs on foreign goods and promote domestic production. This could strain relationships with some trading partners and result in retaliatory tariffs or other actions against U.S. goods. In his first term, Trump seemed to prefer bilateral trade agreements to multilateral accords. However, Trump did support the renegotiation of NAFTA, which became the U.S., Mexico and Canada Trade Agreement (USMCA). USMCA is scheduled to undergo a review in 2026, and each of the countries is preparing for domestic consultations to evaluate how USMCA is operating. Trump has already indicated his intention to utilize the six-year renegotiating provision under USMCA to revise the agreement.

Tax

One of Trump's signature accomplishments during his first term was the Tax Cuts and Jobs Act (TCJA). Many provisions of the law are set to expire at the end of 2025. Extension of the core tax policies of the TCJA is expected to be a high priority for Trump and the Republican-led Congress in 2025. In addition, Trump has proposed other tax policies such as further lowering the corporate rate to 15% and not taxing tips or overtime.

In terms of international tax policies, Trump has expressed a commitment to reshoring, potentially implementing tax credits and deductions to incentivize U.S.-based production, particularly for critical industries. His administration might also revisit global minimum tax policies, which have been under discussion internationally, as he has previously expressed reservations about international agreements that could limit U.S. tax autonomy.

TiCOLD



WE BUILD WINNERS.

Every Ti COLD project begins with a strong customer relationship based on trust and collaboration, and ends with a cutting-edge property — both built to last. What can we build for you? **Visit [TiCold.com](https://www.TiCold.com) today.**



2023 WINNER:
Under \$35MM Category **Core X Complete**

2023 FINALIST:
Over \$35MM Category **Sierra Supply Chain Services**

Border Security and Immigration

Border security and immigration were prominent in Trump's campaign messaging. He has tapped the former Immigration and Customs Enforcement Director, Tom Homan, to be in charge of border policy, and there are plans to conduct deportations of undocumented migrants and complete the border wall. Concerns have been expressed over the potential impact deportations will have on the availability of farm labor.

As the transition to the new Trump Administration continues, GCCA will be closely

monitoring developments, engaging with policy makers and advocating for policies beneficial to the cold chain. ☎

LOWELL RANDEL is Senior Vice President, Government and Legal Affairs at GCCA.

EMAIL: lrandel@gcca.org

KERRI MARBUT is Coordinator of Government Affairs at GCCA.

EMAIL: kmarbute@gcca.org



®
for LIFE

The Natural Leader for LIFE



Your One-Stop Shop for Natural Refrigerant Equipment and Solutions

- EVAPCOLD® Low Charge Ammonia Systems
- EVAPCO LMP Purity Transcritical CO₂ Systems
- Evaporative Condensers
- Ceiling Hung and Penthouse Evaporators
- Critical Process Air Units (CPAs)
- RVS Pressure Vessels and Packages
- Water Treatment and Water Conservation Systems
- eco-Air™ Air-Cooled Condensers and Gas Coolers
- EVAPCO SelectTech Automation and Controls





GCCA ADVOCACY IN BRAZIL: NOTABLE ADVANCEMENTS YET CHALLENGES PERSIST

Overcoming regulatory hurdles in Brazil's cold chain logistics.

By Isabela Perazza

As Brazil's cold chain logistics sector evolves, the Global Cold Chain Alliance (GCCA) is on the front lines, monitoring the regulatory landscape and engaging with government initiatives that affect operations. Under the leadership of the Food Safety Committee, and supported by members contributing to the Advocacy Fund, 2024 has already seen notable advancements though several challenges persist, as GCCA Brazil Director Isabela Perazza explains.

This year, GCCA has secured significant victories on regulatory issues specific to the cold chain sector, largely fueled by GCCA's robust advocacy efforts. However, operators still grapple with production-oriented regulations that can impede efficiency and compliance. These regulations often prioritize production metrics, overlooking the unique requirements of temperature-sensitive logistics, leading to a disconnect between regulatory expectations and the realities of cold chain operations.

One concern identified by members is the notable increase in products that are directly stuffed into containers at production sites. While this practice can streamline logistics for specific regions, it introduces complexities. With ongoing delays in loading windows for ships, products are spending extended periods in transit before they reach ports or

container terminals. This prolonged transit not only heightens the risk of temperature deviations but also restricts opportunities for better quality control that port warehouses could provide.

In response to these emerging challenges, GCCA is proactively supporting its members through the export qualification process for key markets such as China. With global demand for Brazilian products climbing, ensuring compliance with international standards is now more crucial than ever.

Moreover, GCCA is closely monitoring member qualifications for various markets, including Hong Kong, Mexico, the Dominican Republic, and Cuba. This commitment ensures that operators can expand their market presence while maintaining the integrity of their cold chain processes.

To further assist members in navigating these complexities, GCCA has proposed a sector-specific self-control decree. This groundbreaking initiative aims to establish a benefits program alongside a comprehensive sector manual to help operators manage the regulatory landscape more effectively. By providing clear guidelines and support mechanisms, the self-control decree empowers cold chain operators to enhance compliance, boost operational efficiency and ultimately offer superior service to their customers.

As the Brazilian cold chain logistics sector grapples with a mix of regulatory advancements and enduring challenges, GCCA's leadership remains essential in guiding operators through these transformative changes. The industry's capacity to adapt will be crucial in meeting the growing demands of both domestic and international markets. By leveraging support programs and collaborating closely with regulatory bodies, stakeholders can work collectively towards a more efficient and resilient cold chain logistics framework in Brazil.

In this evolving landscape, GCCA stands ready to support its members, ensuring they are equipped to navigate both the opportunities and challenges ahead as they strive for excellence in cold chain logistics. 🌐

ISABELA PERAZZA is Brazil Director at GCCA.

EMAIL: iperazza@gcca.org



Leading the way in sustainable refrigeration

Cold, chilled or frozen – we've pioneered industrial refrigeration for more than 50 years. Now setting the standard in environmentally responsible cooling applications, our products, systems and controls use CO₂ natural refrigerants for outstanding safety and energy efficiency.



For more information, scan the QR code or visit www.mmcarnot.com

The power behind **your mission**



Transcritical CO₂ condensing units from 10–85 tons
Transcritical CO₂ industrial chillers from 50–500 tons
Transcritical CO₂ industrial racks from 50–400 tons





WHERE'S THE BEEF?

The demand for red meat is holding on despite shifting consumers and sky-high prices.

Despite the threat of lab grown meat, record high prices and evolving consumer appetite for the real thing, beef trade forecasts for both imports and exports are raised for the second half of 2024, reports the U.S. Department of Agriculture. In 2025, beef imports are again expected to increase in the second half of the year, indicating a nearly flat change on an annual basis. Beef exports are raised in all quarters on improved outlook for demand but remain 13% lower year over year.


United States beef production is expected to slow again in 2025, but consumer demand in the United States and export markets has remained strong, according to the U.S. Meat Export Federation. “Consumers are paying record high prices for U.S. beef, and this year,

fed beef production is actually exceeding year-ago levels: paying higher prices for the same or larger volume indicates strong demand,” notes Erin Borrer, Vice President, Economic Analysis at the U.S. Meat Export Federation. “The recognition of U.S. Choice and Prime

as differentiated, high-quality product has enabled and driven continued large exports at higher prices.”

Ben Medearis, Vice President Business Development – Protein Sector at Ameri-cold, says, “We expect domestic beef cattle to remain low through the first half of 2025. Imported beef trim, which is used to create ground beef, is strong and we expect it to remain strong throughout 2025,” says Medearis. “Beef trim is currently helping with cold storage inventories of beef, and we see slight improvements in cold storage inventories forecasted for the second half of 2025.”

Far to the south in Brazil, the outlook is positive as the beef sector has been showing a recovery in prices in the domestic market since 2023, also driven by exports with the dollar remaining above 5 Brazil real (BRL). “In my view, the supply of white meat has



been stable, not leading to an increased supply,” observes Carlos Pelc, New Business Executive at UNIFRANGO. “The external market for red meat is behaving similarly to white protein, with China as one of the main purchasing markets.”

Pelc says there may be an adjustment between supply and demand, as farmers securing the price of the arroba above 300 BRL will allow for better control of production schedules and reduced supply pressure. “For both meats (white and red), the market is showing signs that we will enter 2025 with firm prices and balanced supply.”

In the export market, Pelc believes the current trend of industrial plants increasingly seeking to containerize on site, minimizing shipments to logistics operators, will continue to dominate. “This is a strategy to mitigate costs and maximize profits,” Pelc explains. “In the domestic market, the trend is for the main market players (industry) to be increasingly present at the point of sale, making the operations of picking and last-mile delivery to the final consumer highly relevant,” he says.

The Real Deal?

The protein meat market has grown in recent years, driven by several factors including increased demand for lab grown proteins from the growing number of vegans or vegetarian consumers looking for ways to supplement their protein needs. Market growth in plant based or lab grown proteins is also driven by consumers becoming more aware of the environmental impact of meat and are looking for healthy, ethical, sustainable and cost-effective alternatives.

Medearis says inventory for plant-based cultivated meat is forecasted to remain unchanged and the consumption trend is leveling out in the category.

“I understand that this market is niche, production is expensive, and there is not yet a scale that can support or provide economic viability,” says Pelc. “Additionally, there needs to be an identity created; today, ‘plant-based’ products mimic original meat.”

Plant based product demand was tiny and has diminished, says Borrer. “A great example is the SIAL food show, where two years ago there was a huge presence of plant based products and hype and this year the footprint was minimal. Consumers choose real red meat for its taste and nutrition attributes.”

A Competitive Market

Pelc points out the cold chain industry urgently needs to ensure that the understanding of MAPA (Brazilian Ministry of Agriculture, Livestock, and Food Supply) regarding cold chain operators leads to the establishment of specific regulations. “The fact that the cold chain operators are subject to the same legislation as industrial plants has been causing a rethink of operational practices for some time,” he says. “There is a need for specific rules rather than broad ones that compare and equate our facilities with the industrial sector.”

With the current competitive landscape and cold storage capacity added to the market, Medearis believes the biggest driver for the industry is cost control. “This goes for not only cold storage but over-distribution cost. With the low inventories of beef and more imports needed to meet demand, costs increase, and suppliers are always looking for better alternatives,” he says.

As parts of the world continue to develop, such as in Africa and Southeast Asia, there will be increased demand for meat and the cold chain is a necessary component of that demand, points out Borrer. She adds that these regions will also rely on imports to meet part of their growing demand for meat, so cold chain infrastructure is needed at the port and within the markets.

“Even in a seemingly fragmented world, trade in meat is needed because of the natural resource restrictions,” says Borrer. “We will continue to rely on ocean shipping and cold storage around the world to manage products and meet growing consumer demand for these delicious and nutrient-dense products.”

Borrer adds that convenience will also remain a key driver with potential for value-added, e-commerce, delivery and related infrastructure.

Meaty Challenges

Pelc contends if the industrial sector believes that outsourced refrigerated logistics operations only serve to increase costs in the supply chain, there won’t be significant changes.

“What is needed is for the industry to understand that Logistics Service Providers should be an extension of industrial plants, allowing industry to focus on its core competencies, production and leveraging expertise in industrial processes, while partnering with

Freeze or Fridge the Faux

As with other products in the cold supply chain, with plant based or lab grown proteins there is a balance when choosing between refrigeration and freezing as the desired cold production, storage, and distribution method. From a food safety and quality standpoint, minimizing changes in temperature and state are important. However, a combination of freezing and refrigeration may make the most sense to maximize a product’s life in the cold chain according to experts.

us for outbound transportation, warehousing, picking, and food safety with last-mile delivery,” says Pelc.

For the domestic market in Brazil, Pelc says it’s essential to maintain the necessary qualifications for various markets. “We will certainly continue to excel in the production of these proteins, and we need to adjust the supply chain,” he says. “In other words, Logistics Service Providers can and should establish partnerships with the industry where both parties achieve economic balance in their operations, supported by appropriate phytosanitary measures at all stages.”

Borrer points out this is the year of elections so there is some uncertainty on the trade policy front, and geopolitics are always a factor. The United States has the natural resource base and is ideal for red meat production, she adds.

“We are among the most efficient and sustainable producers in the world, and trade helps to both maximize the value of every animal we produce and provide that efficiently raised, nutrient-dense food to consumers around the world, including those where local production is limited,” says Borrer and adds, “The red meat supply chain will remain resilient.”

“Overall, the beef supply chain is strong,” notes Medearis. “We believe consumer demand will continue to drive consumption regardless of geopolitical, regulatory and environmental changes and challenges.”

ALEXANDRA WALSH is a Senior Publishing Consultant with Association Vision and Editor-in-Chief of COLD FACTS.

EMAIL: awalsh@associationvision.com



Stellar and Maple Reinders Scoop Awards

The Controlled Environment Building Association names Stellar of Jacksonville, Florida and Maple Reinders Constructors Ltd. Of Ontario, Canada, as the recipients of the 2024 CEBA Built By The Best Award. The awards were presented during the CEBA Annual Conference and Expo held in Ponte Vedra Beach, Florida, in November.

The nominations are organized into two categories – projects under \$35 million and over \$35 million. Stellar won the award for its over \$35 million state-of-the-art 136,000 square foot, 140-foot tall, frozen food storage facility extension in Russellville, Arkansas.

Maple Reinders Construction Ltd won the award for its under \$35 million, 160,000 square foot, multi-use facility constructed for Dot Foods Canada of Ingersoll, Ontario.

“Congratulations to Stellar and Maple Reinders that emerged from an extremely competitive field,” says GCCA President and CEO Sara Stickler. “CEBA members are THE experts in building and delivering facility innovation for the cold chain, and that is why we are so pleased to recognize excellence through the Built By The Best Award program each year.”

CONGRATULATIONS TO THE WINNERS OF THE CEBA BUILT BY THE BEST AWARD



2024 CEBA Built By The Best Award Recipient

Daryl Wolfenbarger, Project Manager at Americold, holds the Stellar-Americold teams' 2024 Built By The Best winner's plaque.



2024 CEBA Built By The Best Award Recipient

Joseph Sabourin, Project Director, Food and Beverage at Maple Reinders represents the 2024 Built By The Best winning team of Maple Reinders Construction Ltd-Dot Foods.

THE MAGNIFICENT SEVEN: CEBA BUILT BY THE BEST FINAL REVIEW

*Meet the finalists for the 2024
Built By The Best Award.*

By Keith Loria

Now in its ninth year, the Built By The Best Award, established by the Controlled Environment Building Association (CEBA) – a key partner of the Global Cold Chain Alliance (GCCA) – celebrates the creativity and expertise of those involved in exceptional construction or renovation projects for controlled environment buildings worldwide.

This year, the competition attracted hundreds of impressive submissions from CEBA members, with seven projects selected as finalists for the 2024 award.

Here's a glimpse of the seven companies that contended for this year's Built By The Best accolade. Full case studies of the winning projects as well as the finalists will be featured in Cold Facts throughout 2025.

Cubic 33 Group **for Emergent Cold LatAm**

Emergent Cold LatAm, a temperature-controlled food storage and logistics company in Latin America and the Caribbean, hired Cubic 33 Group to construct a frozen food warehouse located in the city of Talcahuano in Chile. Situated in a region globally recognized for its seafood and fruit production and exports, the warehouse is a strategic enhancement to the local cold chain infrastructure, featuring a storage capacity of 3,164,424 square feet and 37,000 pallets.

Cubic 33 Group was faced with a tight deadline, requiring the simultaneous design, permit acquisition and construction start. It also dealt with an unusually heavy rainy season, complicating tasks including earth movement and footings. Seismic considerations added to the challenges.

Throughout the job, Cubic 33 Group incorporated numerous technologies, materials and methodologies to improve the efficiency of the facility. For example, it utilized steel-fiber reinforced concrete for the slabs, allowing the company to reduce the number of construction joints. It also added heated slabs and rapid doors with air curtains, which reduced air exchange and minimized ice accumulation within the chambers.

Evans General Contractors **for RL Cold**

Evans General Contractors completed a cold chain storage facility for RL Cold on a 29-acre site in Wilmington, North Carolina.

The fully customized build-to-suit project offers adaptability with various temperature ranges, a deep dock for value-added services and a commitment to sustainability. The LEED Gold-certified facility showcases building technologies, such as a CO2 transcritical refrigeration system, VNA racking, in-rack blast freezing, solar panels and rain-water reclamation.

The VNA slabs, engineered and poured by Fricks, were laid on top of 40 psi under-slab insulation in 8-foot wide strips throughout the freezers and QFM room. To optimize production, Evans coordinated the daily pouring of

these strips while considering the impact on other trades. These pours not only affected access for trades within critical areas but also required allowing sufficient time for the slabs to cure before moving equipment onto them.

Notable for operational efficiency is the integration of backup power for the refrigeration system in addition to life safety devices connected to emergency generators. This setup allows the facility to operate at 75% capacity for 24 hours during a power outage, ensuring a continuous flow of products while permanent power is restored.

Fisher Construction Group **for Agile Cold Storage**

Agile Cold Storage engaged Fisher Construction to design and build an additional 92,000-square-foot ASRS (automated storage retrieval system) cold storage facility at its operations in Gainesville, Georgia.

The facility was conceived as a large blast freezer capable of rapidly cooling the approximately 50% of products arriving warm from the processing facility. With a capacity of 48,260 pallet positions, Fisher constructed a rack-supported building featuring six cranes and designed to maintain a final operating temperature of -10 degrees.

Fisher also took on the design and construction of a 24,150-square-foot loading dock equipped with an automated conveyor system. Most of the refrigeration equipment, including six ALTA units, was situated on the roof of the loading dock, adding 435,000 pounds of weight to the structure.

An innovative aspect of the project design was the incorporation of ASRS buildings that could be situated at a significantly lower elevation than the loading dock. This design feature, combined with the automation cranes'

ability to retrieve products from any height within the system, allowed Fisher to reduce the overall building height to comply with local height restrictions while optimizing the site layout.

2024 CEBA Built By The Best Award Recipient

Maple Reinders Construction Ltd.

for Dot Foods Canada

Dot Foods Canada, Inc., enlisted Maple Reinders Construction Ltd. to design and build a new 168,875-square-foot distribution center in Ingersoll, Ontario, which will also serve as its flagship Canadian headquarters.

The facility features an 85,000-square-foot freezer maintained at -18°C to -30°C as part of a sustainably focused CO2 refrigeration system, a 30,000-square-foot cooler/cold dock set between 10°C and 3°C, a 45,000-square-foot ambient storage and distribution production area, and 10,000 square feet of office space.

In the refrigerated and ambient storage areas, a concrete slab was designed as a joint-free slab that uses additives for a sustainable approach, minimizing the concrete material needed to achieve the required density. This method not only lowers maintenance costs but also created a more hygienic environment suitable for food-grade use.

The facility's refrigeration systems and underfloor heating were designed to work in a harmonious loop. Thermal breaks interact with the panels, slab, and operations, allowing the systems to function effectively both inside the building and with the surrounding environment. Balancing these interconnections, ensuring the end-product's performance, and prioritizing safety on the construction site were central considerations throughout the design and build phases.

Thought was given to sustainability throughout the project. For instance, using Primx jointless concrete in the construction provided notable environmental and economic advantages. This material accelerated construction by up to 30%, leading to shorter project timelines and reduced resource consumption. More significantly, Primx concrete resulted in up to 70% lower CO2 emissions compared to traditional concrete, aligning with the project's sustainability objectives.

Primus

for RL Cold

RL Cold has successfully completed its latest cold storage distribution facility in Ridgeville, South Carolina. Primus' design-build experience, along with its collaborative approach and problem-solving capabilities, led RL Cold to select Primus for the 295,000-square-foot project.

Among the features of the new facility are an automated de-slat conveyor system, very narrow aisle racking that requires 85% flat floors and in-rack fire suppression, a cascade ammonia CO2 system, fully convertible freezers operating between -10° and 35°, and a QFM blast freezer designed specifically for protein products.

The Ridgeville project achieved LEED Gold certification. Notable features include a 1-megawatt rooftop solar array, a 50,000-gallon rain capture tank that cools refrigeration coils, and electrical vehicle chargers. Additional sustainable practices included heat island reduction measures, the use of low-emitting materials, and the incorporation of environmental product declaration products.

A significant addition to the project was the 1-megawatt solar array, reflecting RL Cold's sustainability commitment, and is expected to offset a large portion of the facility's energy costs. The installation of the 50,000-gallon rainwater capture tank cooled condensers during peak demand, resulting in a 30 percent boost in energy efficiency while halving water requirements compared to traditional cooling tower systems.

Sina Construction

for Congebec

By hiring Sina Construction, Congebec realized its goal of opening a new CO2-based refrigeration plant in Mascouche, Quebec, Canada.

The primary products cooled and frozen in the warehouse are meat products, dairy products and seasonal goods that have high risk of spoilage and temperature abuse as well as strict requirements for freezing. Therefore, the facility was designed with multi-temperature rooms to accommodate different product types.

Measuring just over 9 million cubic feet, it stands as the largest warehouse in Congebec's portfolio to date. The selection of CO2 as the refrigerant is a significant factor in the building's energy efficiency,

The new freezer is equipped with a loading dock featuring access to 30 doors. Key installations include three refrigeration plants totaling over 700 tons, two adiabatic coolers with variable speed fans, two electric boilers for auxiliary heating, 46 evaporators for climate control, and extensive air conditioning and ventilation systems. Additional features comprise 13,000 linear feet of piping, over 500 valves, and more than 400 probes and sensors integrated into the refrigeration system.

An automated central control system manages all climate maintenance within the facility, while the building's overall design meets the latest codes and regulations.

2024 CEBA Built By The Best Award Recipient

Stellar

for Americold Logistics

When Americold sought a 136,000-square-foot expansion of its refrigerated distribution center in Russellville, Arkansas, to accommodate the increasing demands of a food company customer, it turned to Stellar.

The new facility, standing at 140 feet tall, features an ASRS complete with gantry and loop connections that link the warehouse to the loading docks. It also incorporates automation technology, an ammonia refrigeration system, insulated metal panel exterior walls and an advanced fire protection system.

A standout feature of the facility is its fully automated truck unloading system designed to streamline logistics operations by automating the transfer of goods from trucks to storage. This significantly reduces the time and labor involved, enhancing efficiency and addressing labor shortages while providing a scalable solution to adapt to future growth and market demands.

Building Information Modeling (BIM) was utilized throughout the project lifecycle, facilitating precise coordination among various trades, including structural, mechanical, electrical, and automation teams, while helping to minimize potential conflicts. ☞

KEITH LORIA is an award-winning journalist who has been writing for major newspapers and magazines for close to 20 years, on topics as diverse as sports, business and technology.

EMAIL: freelancekeith@gmail.com



LIVE WIRELESS DATA

BUILT-IN BARCODE SCANNER

PRODUCT & AIR TEMPERATURE SENSORS

CONVENIENT DOCKING STATION



Say goodbye to guesswork and hello to reliability! Introducing T Probe, a cutting-edge IoT device that enhances your freezing system. With its state-of-the-art technology, T Probe guarantees enhanced reliability, ensuring every freezing process executes correctly every time.

T Probe is more than just a temperature probe - it's a data powerhouse! In addition to recording product and air temperature, capturing and associating your product's metadata with the built-in barcode scanner is easy, breaking down those data silos and bringing all the crucial information together in one central source.

A Product of



Fort Wayne, IN 46818 • (260) 234-2151 • www.live-wire.com



THE MARKET EXPERTS' ROUNDUP

*Experts join us at our events throughout the year –
here are some of the highlights shared at various events
through the second half of 2024.*

NORTH AMERICA

Xinnan Li, Rabobank

Headwinds

2024 has been a challenging macroeconomic environment with clear signals of weakened consumer spending. Restaurant sales were down 6% and grocery sector spending down 2% in Q2 2024. This suggests a broader trend of consumers reducing their overall spending rather than simply shifting their dining preferences. The notable exception is the online food delivery sector. Food delivery spending has doubled since pre-pandemic levels, driven primarily by increased order frequency.

Inflation remains a significant concern. While energy prices have exerted downward pressure on overall inflation, “core inflation” (excluding energy and housing) persists, indicating sustained upward pressure on the prices of essential goods.

Unemployment, rather than inflation itself,

is the more pressing issue driving macroeconomic uncertainty. The ratio of job openings to unemployed individuals has fluctuated significantly, highlighting a complex labor market dynamic that will influence consumer spending and economic growth in the coming years.

Demographic Shift

The U.S. population is aging, with a projected addition of 25 million people aged 75+ by 2050. This aging population will likely have different dietary needs and preferences, influencing demand for specific food products and services. Furthermore, younger generations in the United States are becoming increasingly ethnically diverse. This will all impact food choices and spending.

Lifestyle Change

More home cooking. The American Time Use Survey (2003 vs 2023) shows a notable increase in time spent on food preparation,

coupled with a decrease in time dedicated to other activities. This suggests a greater focus on cooking and eating at home.

There's also a trend towards more pet ownership and less emphasis on having children. This shift has significant implications for the pet food market and other related industries. Furthermore, the overall trend leans towards a more individualistic, fun-seeking lifestyle, with less emphasis on community engagement and traditional work-life balance.

The Rise of the GLP-1 Diet

The rising use of GLP-1 weight loss drugs, such as Ozempic and Wegovy, is impacting the food industry. There is enough evidence of growth in their use to suggest a population level shift in overall consumption, fewer fatty and sugary foods, and more protein. Food manufacturers will need to adapt by reformulating products and developing companion products to cater to consumers using these medications.

IMAGINE A TRULY TURNKEY eTRU SHORE POWER SERVICE

OUR SERVICES FOR INSTALLATION & MANAGEMENT OF ELECTRIC
TRANSPORT REFRIGERATION UNIT SHORE POWER INCLUDE:

- ▶ Infrastructure design and installation
- ▶ Revenue-grade dock metering and monitoring
- ▶ Real-time truck presence/plug status
- ▶ Automated billing by customer
- ▶ Easy data sharing for carbon reporting & compliance
- ▶ Manage time-of-use, demand charges, Coincident Peak & DR
- ▶ Facilitation of federal, state, and utility programs & incentives

as part of the

coldOS™

complete energy
optimization solution suite
for cold chain facilities



Process controls

- ▶ Wireless dock door monitoring
- ▶ Blast freezing optimization
- ▶ Automated load control & demand response



Refrigeration performance

- ▶ Temperature mapping & alerting
- ▶ Coefficient of Performance in real time
- ▶ Equipment monitoring & troubleshooting



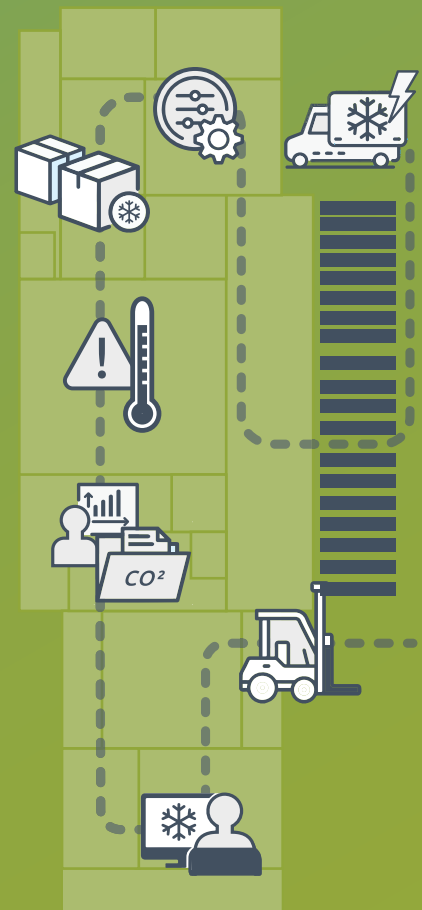
Holistic energy & carbon data

- ▶ Cold chain energy KPIs & suggestions
- ▶ Carbon intensity by customer & SKU
- ▶ DER monitoring



eTRU services

- ▶ Shore power design & installation
- ▶ Real-time plug status
- ▶ Automated billing by customer



GET STARTED TODAY

BusDev@ndustrial.io



Eduardo Ragasol speaking at the GCCA Latin America Conference, Panama City, November 2024.

LATIN AMERICA

Eduardo Ragasol, Managing Director,
NIQ Mexico

Growth and Inflation

Growth is expected to remain above 2019 levels, although with variations across Latin American countries. Inflation is largely stable or slightly decreasing in 2025, except for Argentina, which shows high inflation rates.

Latin American FMCG (Fast-Moving Consumer Goods) value growth is showing a slow recovery, primarily driven by price increases rather than volume increases. Food price increases outpace the overall FMCG average.

Cautious Consumers

Thirty percent of Latin Americans report a worsening financial situation, largely due to the increased cost of living. Even those not experiencing financial hardship remain cautious consumers. Consumers are cutting back on non-essential spending (e.g., dining out, entertainment), while prioritizing essential expenses (e.g., household bills, education). They are employing cost-saving strategies such as buying on sale, switching to cheaper products and monitoring their spending more closely.

Shopping Smaller and Frequently

Latin Americans make an average of 106 grocery trips per year for home meals, buying six units per trip. Refrigerated categories (fresh meats, dairy, etc.) account for 30-60% of food spending. Frozen foods are gaining popularity as a practical option offering convenience and reduced waste.

Economic conditions have increased the number of trips, but consumers are purchasing smaller package sizes. About 35% of food spending is on groceries for home consumption. The increasing penetration of appliances like refrigerators, microwaves and air fryers is impacting food storage and consumption practices.

CENTRAL EUROPE

Pawel Walentynowicz, Managing Partner,
AMA International

Poland's Cold Chain Market Boom

The Polish frozen food market, valued at \$5 billion USD in 2022, is expanding rapidly (10.43% CAGR), driven by agri-food dominance, export infrastructure and strategic location within the EU. Key challenges include rising energy costs and workforce limitations.

CEE Cold Chain Growth

Central and Eastern Europe's cold chain market anticipates a 5% CAGR (2024-2029), fuelled by pharmaceutical, food and e-commerce growth. However, infrastructure gaps and skilled labor shortages pose significant hurdles.

Baltic States Opportunities

The Baltic states show increased focus on quality cold chain logistics, with Baltic Logistic Solutions a key player. They're strategically positioned as an EU-CIS trade corridor, but market fragmentation hinders standardization.

Romania and Bulgaria Infrastructure Needs

These countries face urgent needs for cold storage and last-mile delivery networks, particularly in rural areas. Pharmaceutical and e-commerce growth are driving demand, but infrastructure limitations are a constraint.

Presentations and other content resources shared at GCCA events are available to members in the resource library on the GCCA Website www.gcca.org/resources/resource-library



Pawel Walentynowicz speaking at a GCCA Cold Chain Connection Seminar in Warsaw, November 2024.



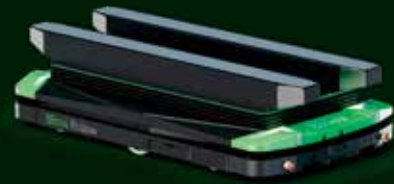
Bring on the cold



MovuTM atlas

2D Pallet Shuttle

- Fully automated high-density storage
- Efficient, fast and reliable
- Designed to work in temperatures from -20°F upwards



MovuTM ifollow

Autonomous Mobile Robot (AMR)

- Slimline design 17cm high
- Operable in temps from -13°F with no condensation or battery degradation
- Shifting loads of up to 2,645 lbs



BE THERE IN 2025: GCCA EVENTS SCHEDULE

As we head to the end of GCCA's busiest-ever year of events and programs, Cold Facts reviews the program and previews another exciting year ahead—time to mark your calendar with the must-attend events taking place worldwide in 2025.

Bringing People Together

GCCA President and CEO Sara Stickler explains. "Bringing people together has been a core purpose of our organization since it was first created more than 100 years ago. There is a unique value to spending time with your industry peers in a noncompetitive environment. The connections made help not just individuals increase their network and knowledge but also move our industry forward.

"It energizes the work of the Association to interact with members across our various events, sharing best-practices, innovations and discussing future opportunities and challenges for the industry.

"As a global alliance, GCCA, GCCF and CEBA have one of the most ambitious in-person events programs in the world, and it pays off in terms of quality engagement, education and training benefits and the creation of business-to-business opportunities for all our members."

Conferences

With the Annual GCCA Convention at its heart, the GCCA, GCCF and CEBA run a program of conferences, congresses and conven-

tions that are not to be missed. Taking place in five locations worldwide, delegates hear talks on market trends, industry challenges, business solutions and technological innovations. They also get exclusive networking opportunities to connect with professionals from across the region and the world.

- 26-28 March 2025 | GCCA European Conference and Expo | Marriott Copenhagen Hotel | Copenhagen, Denmark
- 11-12 June 2025 | Brazil Cold Chain Congress | Sao Paulo, Brazil



- August 2025 | GCCA Africa Conference | South Africa
- 27-28 August 2025 | GCCA Latin America Conference | Mexico City
- 15-17 September 2025 | GCCA International Convention | La Cantera Resort & Spa | San Antonio, Texas, United States
- 3-4 November 2025 | CEBA Conference & Expo | Caesars Palace | Las Vegas, United States

Cold Chain Connections

Alongside the main events in the calendar, the Cold Connection series provide an opportunity for regional leaders to meet each other in key locations across the world. These events are more informal and are an opportunity to get to know or stay in touch with the work of the GCCA, GCCF and CEBA, as well as hear from experts on various topics. These events usually occur alongside another industry event, such as a significant regional exhibition, or are accompanied by facility visits and study tours.

- 5 February 2025 | Santo Domingo, Dominican Republic
- 9-10 April 2025 | Atlanta, Georgia, United States
- 29-30 April 2025 | Philadelphia, Pennsylvania, United States
- 16 July 2025 | Mexico City, Mexico
- July 2025 | Toronto, Canada
- August 2025 | Kansas City, United States
- 4 September 2025 | Rotterdam, The Netherlands
- 6 October 2025 | Cologne, Germany
- October 2025 | Rio De Janeiro, Brazil
- 29 October 2025 | Guatemala City, Guatemala
- 14 November 2025 | Paris, France

Policy Forums

GCCA Policy Forums are unique events that bring cold chain professionals to the heart of decision making in key strategic regulatory markets in different parts of the world. A unique opportunity not only to learn and discuss the regulatory and policy trends that are shaping the global cold chain, but also an opportunity to have a direct impact as an advocate for our industry.

- March 2025 | Policy Forum Brazil | Brasilia, Brazil
- June 2025 | Policy Forum Europe | Brussels, Belgium
- 21-23 July 2025 | Cold Chain Policy Forum U.S. | Royal Sonesta Hotel, Washington D.C.



Cold Chain Institutes

Powered by the Global Cold Chain Foundation, Cold Chain Institute is a unique learning and event experience, taught as a three-year program. Professionals working in operational and support roles across the cold chain come together to learn the core and broad skills required to develop as a cold chain executive.

2025 is the Institute's 60th Anniversary year.

Events Confirmed:

- 2-4 February 2025 | U.S. Cold Chain Institute East | Georgia Tech Hotel and Conference Center | Atlanta, Georgia
- 24-26 February 2025 | U.S. Cold Chain Institute West | Tempe Mission Palms Hotel | Tempe, Arizona
- 27-29 May 2025 | Cold Chain Institute Australia | Sheraton Melbourne Hotel | Melbourne, Australia

Provisional Events:

- 14-16 July 2025 | Cold Chain Institute Latin America | Mexico City, Mexico
- 13-15 August 2025 | Cold Chain Institute Brazil | Sao Paulo, Brazil
- 1-4 September 2025 | Cold Chain Institute Europe | Rotterdam, The Netherlands

Showcase Your Brand and Services

A GCCA event is a unique type of business introduction and marketing opportunity. It offers a relaxed and engaging environment that has proved to be a great way for key suppliers of solutions, equipment and services to introduce themselves, better understand and reinforce their brand and network in the global cold chain community. To find out more about the range of partnership and sponsorship opportunities for GCCA events in 2025 contact Brian Lynch at blynch@gcca.org.





**28th GCCA European
Cold Chain Conference**
26–28 March 2025
Copenhagen, Denmark
Global Cold Chain Alliance

Join Temperature-Controlled
Supply Chain Leaders to

LEARN
NETWORK
INNOVATE

Register now at
www.gcca.org/events



COLD CHAIN DEVELOPMENT

NEWS ABOUT GCCF INTERNATIONAL PROJECTS

This column features news about key projects of the Global Cold Chain Foundation (GCCF) and its work with members, aid organizations and international development partners to help emerging economies and lower-income countries meet the challenges that arise when growing a safe and efficient global cold chain.



The GCCF delegation met with representatives from CEBA member CT-Technologies and local operator Izako in Tema, Ghana, on the site of Izako's newest facility. CT-Technologies is leading the construction phase of the project.

NEW PROJECT

Mauritania Food for Progress: Horticulture and Climate-Smart Agriculture Project, 2024 – 2025

Partnered with Partners of the Americas and LixCap

GCCF has been subcontracted by LixCap and Partners of the Americas to deliver technical assistance and educational programming for local operators. This project aims to increase domestic horticultural production through climate-smart agricultural practices, improved value chains and cold storage, agro-dealer training to provide improved agricultural inputs such as seeds and fertilizer, and improved post-harvest handling, storage and processing for the project's targeted crops. The project will work with agricultural cooperatives, farmers and agricultural schools within the project zone, and also target key private sector actors to improve market access and cold storage and logistics.

ACTIVE PROJECTS

Agricultural Trade and Climate Smart Innovations (ATraCSI) Project, 2023 – 2027

Partnered with Improving Economies for Stronger Communities (IESC)

In October, GCCF hosted a webinar in collaboration with GCCA member LixCap to highlight the findings of our market opportunities study in Central America. Technical experts shared insights into the market opportunities for cold chain in Honduras, El Salvador, and Guatemala, highlighting the important role Guatemala can play as a distribution and cross-border point for the Central and South American regions. In December, Dr. Elhadi Yahia from GCCF's Council of Scientific Advisors, traveled to El Salvador and then to Guatemala to deliver postharvest processing and handling training for retail and farmers.

Bangladesh Trade Facilitation (BTF) Project, 2020 – 2025

Partnered with Venture37 and LixCap

Working closely with the project staff and GCCA member LixCap, GCCF is developing a webinar presentation with U.S. Commercial Services to highlight opportunities for U.S. operators and suppliers to access the Bangladesh market. This webinar was meant to take place earlier, but was delayed due to political instability, which has since been resolved. GCCF continues to support curriculum development for a local vocational school to educate local commercial refrigeration technicians and engineers to provide service and maintenance for cold chain equipment. Finally, GCCF experts continue to advise on best practices in warehouse operation and design with technical assistance trips taking place in November and December.

Dominican Republic Trade Safe (TraSa) Project, 2021 – 2025

Partnered with Improving Economies for Stronger Communities (IESC)

In September, Ing. Moises Ventocilla (Emergent Cold LatAm) delivered a virtual training on energy management to interested operators in the Dominican Republic. GCCF is drafting a perishable handling handbook in Spanish with the aid of Dr. Elhadi Yahia, member of the GCCF Council of Scientific Advisors. Additional training opportunities are under consideration as the project plans out its final year.

West Africa Emerging Markets Program, 2024 – 2025

As part of the USDA-funded Emerging Markets Program (EMP), a team of GCCF Technical Experts, including James Eason (GCCF Consultant), Carsten Thorsen (CT-Technologies), Greg Laurin (Conestoga Cold Storage) and Nicholas Pedneault (Congebec Inc.), carried out a rapid assessment in Ghana, Senegal and Ivory Coast to better understand the market opportunity, identify key players and analyze skills gaps in cold chain design, construction, operation and maintenance. In December, the team presented their findings and recommendations for future capacity building, including mentorship, training, consultations and a study tour to South Africa in 2025. In January, the project will kick off its mentorship program, connecting local operators with international experts who can advise on best practices in various aspects of the cold chain.

Cambodia Owner's Engineer Design Build Advisory Services, 2022 – 2024

In September, GCCA member Lineage assisted GCCF by providing a Southeast Asia regional cold chain expert to travel to Cambodia to work with a local company that GCCF has supported in different projects since 2019. Anthony Heng attended a one-day event to present on cold chain opportunities and to answer questions from a local cold storage business that recently opened.

Storage Through Organized Refrigeration (STOR) App, 2024

Partnered with Warehouses4Good

GCCF developed and piloted a pilot smartphone app to connect food supply agencies with the owners of cold storage space in the Washington, D.C., Maryland and Virginia

On the Ground in West Africa

In October, GCCF Technical Expert James Eason traveled to Accra and Tema, Ghana, alongside Professor Francis Appiah, local GCCF Postharvest Expert; Paul Matthew, GCCA Africa Director; and Madison Jaco, GCCA Manager of International Projects. While

there, the team met with local cold chain operators – from meat processors to dairy producers to frozen food distributors – to assess the cold chain operations and identify challenges and opportunities for the market.

One of the greatest challenges facing the industry in the country is access to affordable finance. In 2022, the government defaulted most of its debt as the Ghanaian cedi rose from 6 cedi to the U.S. dollar to 16+. The impact has slowed business across the board, including investment in the cold chain sector.

A spotlight on food safety and food security could change things, however. As more regulatory bodies and public and private investors identify food safety,

nutrition, security, and loss and waste as key issues to address, the cold chain rises in importance to the overall supply chain, not just in Ghana, but throughout the West African region.

The advent of the Africa Continental Free Trade Area also drives interest in the sector to promote the safe and reliable movement of food through the continent. The ongoing project in Ghana, as well as Ivory Coast and Senegal, seeks to improve the knowledge base of cold chain operators and encourage best practices. The goal is to meet international standards to facilitate trade, reduce food waste and improve food safety through the cold chain to protect the food we all enjoy.



Top Image: The Port de Pêche fish port, in Dakar, Senegal, where the GCCF delegation observed local fishermen unloading their catch and processing fish for local and export markets.

Bottom Image: In Abidjan, Ivory Coast, the GCCF delegation visited a local fruit, vegetable and textiles market.

(DMV) area. As the project comes to a close, GCCF is looking for ways to roll this out to the wider membership for nation-wide and eventually international piloting.

Ongoing Industry Support to Reduce Food Loss and Waste

GCCF has completed three courses planned for the four-course virtual training that will be housed in the GCCF Cold Chain eCampus. GCCF is also working with the Federation of European Foodbanks (FEBA) to develop a toolkit for members that will provide information on how to donate product and provide ideas on activities that members can take to support their community with food rescue. The toolkit will also include regional policy-specific resources. Moving into 2025, GCCF plans to explore how to expand the pilot of the STOR app; how to measure and record the magnitude of dump/destroy orders; and will roll out a champions program for food waste reduction. ☺



Nicholas Pedneault, Greg Laurin and Madison Jaco pose for a selfie at a local dairy processing and distribution facility in Dakar, Senegal.



**COLD STORAGE
WAREHOUSING**



**DESIGN/BUILD
CONSTRUCTION**



**QFR ZONE®
BLAST FREEZING**

No other company combines the knowledge and experience in cold storage construction and warehousing that Tippmann Group offers. As owners & operators of more than 130,000,000 cubic feet of temperature-controlled space, Tippmann Group is your single source for cold storage excellence.

FAMILY OWNED & OPERATED SINCE 1968

TIPPMANGROUP.COM



9009 COLDWATER ROAD
FORT WAYNE, IN 46825
(260) 490-3000





GLOBAL COLD CHAIN ALLIANCE® ADVOCACY FUND

ADVOCACY | INDUSTRY PROMOTION | RESEARCH | INTERNATIONAL



GCCA STANDS WITH YOU. THE TIME TO ACT IS NOW.

Never before has our industry faced such uncertainty and vulnerability from America's policy makers, both in the White House and in both chambers of Congress. The Administration and Congress represent challenges and opportunities that we will need to face as an industry, together.

The Administration and Congress are considering a wide range of policies that could impact the cold chain in 2024. Key issues:



FARM BILL

- GCCA will be actively engaging with Congress to advance cold chain industry initiatives and priorities.



CLIMATE CHANGE

- Pursuing aggressive policies to address climate change, through both executive action and legislation
- Implementation of the AIM Act to phase down HFCs



TAXES

- Increasing the corporate tax rate, phasing out deductions for pass-through entities
- Raising the top marginal income-tax rate



LABOR

- Strengthening worker organizing, collective bargaining and unions through executive action and legislation such as the PRO Act
- NLRB advancing labor initiatives, like 'micro-unit' organizations and joint employer policies



BURDENSOME REGULATIONS

- Revising EPA's Risk Management Program (RMP) regulation and making additional requirements
- Changes to OSHA's Process Safety Management regulation
- Implementation of FDA's Food Traceability Rule

THERE IS SOMETHING YOU CAN DO.

To learn more about how you can contribute contact
Lowell Randel (lrandel@gcca.org) or visit advocacy.gcca.org.
Visit **ADVOCACY.GCCA.ORG** for more information.



**GLOBAL COLD CHAIN
ALLIANCE®**

+1 703 373 4300
EMAIL@GCCA.ORG
GCCA.ORG

241 18TH STREET SOUTH,
SUITE 620
ARLINGTON, VIRGINIA, 22202

f /GLOBALCOLDCHAINALLIANCE
t @GCCAORG
in /GLOBAL-COLD-CHAIN-ALLIANCE-GCCA

COOL SOLUTIONS

SCIENTIFIC ANSWERS TO COLD CHAIN CHALLENGES

Q: What are some of the challenges or quality concerns of slow freezing product?

A: This is very much dependent on the product to be frozen. The general concern would be food safety. Slow freezing a pallet without spacers could allow microbial activity to occur in the product at the center of the pallet. Freezing time depends on various factors, such as air and product temperature, air velocity inside the freezer, and product composition and dimension. Slow freezing can result in drip loss and lipid oxidation, which can impact the quality of the products. Again, this is product dependent, so you should consider speaking with the supplier about their concerns and recommendations or visiting the GCCF Commodity Storage & Handling Manual for more information on specific commodities.

This answer was provided by Dr. Dennis Heldman, Food Process Engineering Expert and Dr. Subramaniam Sathivel, Frozen Food Quality Expert. 🍷

PRIMUS

770.928.7120 PRIMUSBUILDERS.COM



VISIT OUR WEBSITE



**DESIGN
BUILD
AUTOMATE**

WE'RE **ALL IN** ON YOUR COLD STORAGE FACILITY



THERMAL BRIDGING SOLUTIONS

Armatherm™ is one of the leading suppliers of structural thermal break materials for the construction industry. Our goal is to provide architects, engineers, and contractors with the knowledge and materials to effectively address thermal bridging issues. Armatherm™ thermal break materials have low thermal conductivity, high strength, and have been designed and tested to carry the loads, whilst reducing the cold bridge within a building envelope.

Call +1 844 360 1036, email sales@armatherm.com or visit armatherm.com



The Global Cold Chain Foundation (GCCF) Council of Scientific Advisors is an eminent group of food scientists, logistics, and packaging experts from around the world. The Council provides cutting-edge research and advice to members of the Global Cold Chain Alliance and its Core Sectors.



Dr. Michael Jahncke

Virginia Tech University,
Fish Products Expert
COUNCIL CHAIRMAN



Dr. Donald Fenton

Kansas State University,
Refrigeration Engineering
Expert



Dr. Jeffrey Brecht

University of Florida, Cool-
Climate Fruit & Produce Expert



Dr. Brian Fugate

University of Arkansas, Supply
Chain Management Expert



Dr. Patrick Brecht

PEB Commodities, Refrigerated
Transportation Expert



Dr. Cody Gifford

University of Wyoming, Meat
Products Expert



Dr. Stephanie Clark

New Mexico State University,
Dairy Products Expert



Dr. Dennis Heldman

The Ohio State University, Food
Process Engineering Expert



Dr. Paul Dawson

Clemson University, Poultry
Products Expert



Dr. Faris Karim

Kansas State University,
Ammonia Contamination & Food
Toxicology Expert



Dr. Subramaniam Sathivel

Louisiana State University,
Frozen Food Quality Expert



**Dr. Barbara Rasco, BSE,
Ph.D., JD**

University of Wyoming,
Food Safety & Food Safety
Regulations Expert



Dr. S. Paul Singh

Michigan State University,
Packaging & Labeling Expert



Dr. Debjit Roy

Indian Institute of Management,
Logistics & Operations Expert



Dr. Donald Schaffner

Rutgers, The State University of
New Jersey, Microbiology Expert



Dr. Victoria Salin

Texas A&M University, Agriculture
Economics Expert



Dr. Elhadi Yahia

Universidad Autónoma de
Querétaro, Mexico, Postharvest
Technology, Tropical Fruit &
Produce

Have a burning cold chain question?
Submit an inquiry to the Council of Scientific Advisors
at www.gcca.org/inquiry

MEMBER NEWS

NEWS FROM MEMBERS OF GCCA CORE PARTNERS

A M KING is overseeing a large-scale renovation and expansion at ALDI corporate headquarters in Batavia, Illinois. Three existing office buildings on the 60-acre campus will be refurbished, in addition to design and construction of a fourth structure. The new 56,000-square-foot building will feature a green roof pollinator garden, fitness center, third-party food service and conference center, a two-story atrium and skylight, conversational staircase, covered patio and courtyard.



AGILE COLD STORAGE and **TI COLD** are partnering to construct a new cold storage facility in West Seneca, New York, near the Canadian border that will feature 132,865 square feet with approximately 20,000 pallet

positions. The structure will be 65-foot clear, single deep VNA (very narrow aisle), and maintain temperatures ranging from 40 degrees to minus 10 degrees Fahrenheit. The facility will also utilize a low-charge ammonia system with natural refrigerants to support sustainable operations and is expected to be fully operational in 2025.



ARCADIA COLD will operate a new cold storage building under construction in Crown Point, Indiana. The 323,000-square-foot facility will sit on a 26-acre site, have capacity for about 45,000 pallet positions and feature convertible rooms with temperature capabilities between -10 to 38 degrees Fahrenheit.



BGO COLD CHAIN and Venture One have broken ground on a speculative Class A cold storage facility in Ronkonkoma, New York. Completion of the Long Island property is expected in the fourth quarter of 2025. The facility will have the capacity for about 45,000 pallet positions and feature convertible rooms with temperature capabilities between -10 to 38 degrees Fahrenheit.



IS YOUR CONTROLLED ENVIRONMENT FACILITY BUILT BY THE BEST?

Nominate your project today for the
BUILT BY THE BEST AWARD!

WWW.GCCA.ORG/BUILTBYTHEBEST

Brought to you by CEBA

MEMBER NEWS

NEWS FROM MEMBERS OF GCCA CORE PARTNERS

BGO COLD CHAIN announced the acquisition of Medley Cold Logistics, a 178,000-square-foot cold storage warehouse in Miami, Florida. The facility is 100% leased to Quirch Foods, an international food distribution company.



BGO COLD CHAIN and Yukon Real Estate Partners have broken ground on a 291,000-square-foot cold storage facility outside of Kansas City, Missouri. CJ Logistics America will lease the upcoming property, with most of the space dedicated to global food company Flora Food Group. The warehouse is expected to open in the third quarter of 2025.



LINEAGE has opened a new, fully automated cold storage warehouse in Hazleton Township, Pennsylvania. The facility spans approximately 386,000 square feet and includes approximately 85,000 pallet positions. The building is equipped with cranes and rail-guided vehicles and inbound lanes feature proprietary computer vision tech that automates the receiving process.



RAYMOND CORPORATION celebrated its 10th annual National Manufacturing Day event with a return to on-site facility tours, technology showcases and associate testimonials. The company extended the invitation beyond the local community, offering students globally the opportunity to take part in the event virtually. The activities encouraged

participants to build skills for a future in the manufacturing industry.



REALCOLD has announced plans for a new 380,000-square-foot, temperature-controlled warehouse on a former pharmaceutical company campus in East Hanover, New Jersey, with completion slated for late 2025. Plans call for 50-foot clear ceiling heights and environmentally controlled rooms ranging from -20 to 55 degrees Fahrenheit, plus more than 40 dock doors for inbound and outbound loading and dedicated areas for value-added services. 🔄



LOW TEMP ROOFING EXPERTS

We understand the complexities of low-temperature roofing, from insulation requirements to effective moisture control.

Contact Us at RoyaltyRoofing.com
for a Free Estimate



Over 5 Million
Sq Ft of Low
Temp Roofing
Installed!



Leaders In Cold Storage Construction



Industrial

Commercial

Cold Storage



PLANNING
SEALED DESIGN
RACKING
PRE-ENGINEERED



FOOD PROCESS
STRUCTURAL STEEL
REFRIGERATION
MECHANICALS

Temple, PA | 610-816-6995 | KAISERMARTINGROUP.COM

ASSOCIATION NEWS

NEWS ABOUT GCCA CORE PARTNERS

GCCA CEO Statement on Election of President Trump

In response to the results of the U.S. Federal Elections, GCCA President and CEO Sara Stickler said, “We congratulate President Trump on his election. We also congratulate all those who have been elected to the U.S. Senate and House of Representatives. We look forward to working with the new administration and congressional leadership to promote the continued growth of a resilient, innovative and efficient cold supply chain for consumers and communities across the United States and globally.

“We look forward to continuing our work across all branches of government to promote common sense, consistent and pro-enterprise policies that enable cold chain businesses to deliver for their customers.

“We are also committed to promoting the growth of exports from U.S.-based food pro-

duction and broader manufacturing sectors. We will engage constructively in the policy discussion about future trade policy and continue to make the case for the importance of maintaining balanced and resilient trade routes for food and other temperature-controlled products across the world.”



Newest Facilities Added to the GCCA Energy Excellence Program

Two hundred twenty-eight facilities have gained accreditation under the GCCA Energy Excellence Recognition Program (EERP) that helps temperature-controlled warehouse operators measure and improve energy efficiency at each of their facilities. The EERP is also a tool to communicate to customers a facility's progress in meeting sustainability

objectives. Using qualitative and quantitative assessment tools, operators can track facility performance over time as well as receive progress reports with recommended next steps and links to useful resources. Top performers are recognized based on energy culture and magnitude of savings. To find out more visit <https://www.gcca.org/about/cold-chain/energy-excellence-program/>



European Consortium Wins Funding for Research Into -15C

GCCA is a participant of the consortium that recently received 2 million euros in funding from the Dutch Government. The funding is to conduct a series of laboratory, practical and modelling studies into the practicalities and impacts of a change in practice on



ARE YOU USING AN ENERGY EXCELLENCE CERTIFIED WAREHOUSE AS YOUR COLD CHAIN PARTNER?

Over 160 member facilities of the Global Cold Chain Alliance (GCCA) have made a commitment to:

- ✓ **MAINTAINING A CULTURE OF ENERGY EXCELLENCE**
- ✓ **IMPROVING ENERGY EFFICIENCY**
- ✓ **ACCURATELY TRACKING ENERGY CONSUMPTION**
- ✓ **EXPLORING TECHNOLOGIES FOR CONTINUOUS IMPROVEMENT**

Sign up and learn more at www.gcca.org/energyexcellence

ASSOCIATION NEWS

NEWS ABOUT GCCA CORE PARTNERS

the standard holding temperature of frozen food. The FROSTEQ program will be run by Wageningen University and Dutch cold chain association NEKOVRI.

The project will run for four years and produce:

- Insights into safe frozen food temperature ranges, tolerances and optimum temperature set point in the frozen food supply chain
- Insights into consumer and industry perception of temperature adjustments for storage of frozen food products
- Compilation of validated best practices to reduce energy uses and costs for the entire supply chain.
- Impact analysis of new standards, including baseline assessment of the current situation and insights into energy efficiency over the complete

supply chain and potential reduction of carbon emissions.

GCCA continues to support the Movement to -15C Initiative and other research initiatives in other parts of the world.



New Leaders Elected to GCCA Africa Council

Renier Du Preez of Digistics (Pty) Ltd and Dr. Newton Matope of BigCold Kenya have been elected Chairman and Vice Chairman of the GCCA Africa Council. Council members thanked outgoing Chairman Chris Creed for his leadership and vision and Lizelle van der Berg for her passion and dedication over many years. Both Creed and van der Berg will step off the Council at the end of 2024. @

United Insulated
STRUCTURES

POWER
CONSTRUCTION

Design/Build Specialists in Cold Storage & Food Processing Facilities Since 1966

WEBSITE

www.unitedinsulated.com

CALL US

708.544.8200

CONTACT

Mike Conlon | Vice President

mconlon@unitedinsulated.com

Ryan Gusewelle | Managing Director

rgusewelle@unitedinsulated.com

Innovative Designers
Experienced Builders

NEW MEMBERS

NEW MEMBER COMPANIES OF GCCA CORE PARTNERS

GCCA WAREHOUSE MEMBERS

NCS Cold Stores (S) Pte. Ltd
Jurong Town, Singapore

Ransa Comercial S.A.C.
Callao, Peru

GCCA ASSOCIATE MEMBERS

Carlisle SynTec
Carlisle, Pennsylvania, United States

Facility Innovations Group
Austin, Texas, United States

Newmark
Rutherford, New Jersey, United States

Patrick Hughes, Ltd
Richmond, Virginia, United States

Restored Group Pty Ltd
Drouin, Victoria, Australia

RESOF LLC Sucursal Colombia
Barranquilla, Atlántico, Colombia

SSS Controls LLC
Cleveland, Ohio, United States

Westmount Realty Capital, LLC
Dallas, Texas, United States

GCCF MEMBERS

Feeding Hong Kong
Yau Tong, Hong Kong

Generosity Center
Rancho Cucamonga, California, United States



FOOD SAFETY IS ALWAYS IMPORTANT ... BUT EVEN MORE SO IN A PANDEMIC.

FIND OUT HOW THE COLD CARRIER CERTIFICATION PROGRAM CAN:

IMPROVE YOUR OPERATIONS:

Guides your review & improvement of company practices
for the sanitary and safe shipment of perishables.

DEMONSTRATE YOUR COMMITMENT:

Shows your customers that you're doing your utmost to ensure the safety
and sanitation of perishable shipments, protecting their brand.

DIFFERENTIATE FROM YOUR COMPETITORS:

The Certification shows your status as a leader and
your commitment to improving the cold chain.

gccca.org/certifiedcoldcarrier

NEW MEMBERS

NEW MEMBER COMPANIES OF GCCA CORE PARTNERS

CEBA MEMBERS

Atwell, LLC

Fort Myers, Florida, United States

BC Nordic S.A. de C.V.

Guanajuato, Mexico

Beldon Roofing Company

San Antonio, Texas, United States

Burch Corporation

Birmingham, Alabama, United States

Concrete Fiber Solutions

Buffalo Grove, Illinois, United States

DAN-doors A/S

Skanderborg, Denmark

DSI Group

Land O Lakes, Florida, United States

Elevate Commercial Roofing Systems

Nashville, Tennessee, United States

Panels Plus Inc

Roselle, Illinois, United States

Gebhardt Intralogistics North America

Streetsboro, Ohio, United States

Industrial Building Group LLC

Elizabeth, New Jersey, United States

Kajima Poland Sp. z o.o.

Warszawa, Poland

National Design Build Services

Saint Louis, Missouri, United States

Paramount Metal Systems

Little Rock, Arkansas, United States

Marcus & Millichap

WILLIAMS INDUSTRIAL GROUP

REAL ESTATE

COLD STORAGE BROKERAGE

Q4 FINANCIAL MARKETS RESEARCH BRIEF

Trends and Insights into Investor Demands
for Commercial Real Estate

RESEARCH BRIEF

FINANCIAL MARKETS & CONSUMER SPENDING

CONTACT US TODAY

Luis Ortega

Senior Associate - Cold Storage Specialist
Direct: 858.373.3214
luis.ortega@marcusmillichap.com
License: CA 02071282

Kent R. Williams, SIOR

Senior Managing Director
Direct: 858.373.3193
kent.williams@marcusmillichap.com
License: CA 00823860



Costco Poultry Processing, Fremont, Nebraska

Do you have a system full of HFC equipment? We can help!

Time is running out! We can help you convert your refrigeration system to a clean, efficient, and **environmentally-friendly** central system using ammonia or cascade ammonia/CO₂.

Call Hank Bonar today!

904-631-8966

hank@bonarengineering.com



Bonar Engineering, Inc. | PO Box 60009, Jacksonville, FL 32236

AD INDEX

Armatherm.	33
Bonar Engineering & Construction Company.	41
BRUCHA Corp.	7
Evapco, Inc.	13
Jamison Door Company. . .	Cover 3
Johnson Controls.	15
Kalman Floor Company. . .	Cover 4
Kingspan Insulated Panels.	11
Marcus & Millichap.	41
Metl-Span.	3
ndustrial.io.	23
Polyguard Products.	Cover 2
Primus Builders, Inc.	33
RefrigiWare. . .	Front Cover Wrap, 9
Royalty Roofing.	37
Stow US Inc.	25
The Kaiser-Martin Group.	37
TI Cold.	12
Tippmann Engineering.	21
Tippmann Group.	31
United Insulated Structures.	39
Vapor Armour.	5



JOIN US FOR THE UPCOMING U.S. COLD CHAIN INSTITUTES:

COLD CHAIN INSTITUTE EAST
FEBRUARY 01 – 04, 2025
ATLANTA, GEORGIA

• • • • •

COLD CHAIN INSTITUTE WEST
FEBRUARY 23 – 26, 2025
TEMPE, ARIZONA

Join us this February for the 60th anniversary of the Cold Chain Institute at the East and West events! Celebrate six decades of excellence in cold chain education and innovation with industry leaders. Don't miss the special anniversary reception on February 25th at the Omni Hotel rooftop in Tempe. Register your teams now and secure your spots! For more details, visit our website.



FOR MORE INFORMATION AND TO REGISTER VISIT

WWW.GCCA.ORG/EVENTS





Ambient
75°F



Cooler
34°F

Fresh Ideas Every Day

Our customer had a big idea that they could increase sales by creating a completely different shopping environment in their walk-in beer cooler. Working with the HCR team, their big idea has resulted in increasing their sales by 5X's.

Why Choose Us

Using a completely fresh engineering approach and the principles of psychrometrics, the refrigeration engineers at HCR developed new technologies that pioneered the re-circulatory air door industry.

When you buy Jamison HCR, you buy more than a door. You buy the expertise and experience of a company with demonstrated leadership in the design and manufacture of doors for all types of environments.



Increased Sales by 5X's

Remarkably increased sales by 5X's while reducing energy costs.



Temperature Control

Wide open environment with consistent temperatures maintained throughout space.



Improved Productivity

Elimination of moving door parts and majorly reduced safety concerns.

JAMISON HCR™

55 JV Jamison Drive, Hagerstown, MD 21740

www.jamisondoor.com

(1) 800-532-3667



CONCRETE FLOORING SPECIALISTS



TWINTEC
Global Performance

Kalman

**CONCRETE FLOORING
SPECIALISTS**

DESIGN | BUILD | GUARANTEE

- DESIGN ENGINEERING SERVICES
- CONCRETE FLOOR CONSTRUCTION
- CONCRETE REPAIRS
- MICRO GRINDING AND POLISH
- CONCRETE FLOOR
FLATNESS UPGRADES

www.twintecusa.com



Don't forget to follow us on

LinkedIn

Discover the Twintec Difference

Contact the Twintec Kalman USA BUSINESS TEAM for further information:

Tel: +1 704 896 5955 **Email:** jointfree@twintecusa.com

Regional Office: 10616 Metromont Pkway, Suite 204, Charlotte, NC, 28269, USA