



GLOBAL COLD CHAIN
ALLIANCE®

2020 ANNUAL REPORT

**A VITAL INDUSTRY EMPLOYING
AN ESSENTIAL WORKFORCE**





TABLE OF CONTENTS

- 1 A MESSAGE FROM GCCA CHAIRMEN
- 2 WE ARE THE COLD CHAIN
GCCA CORE PARTNERS
- 4 GLOBAL COLD CHAIN BY THE NUMBERS
- 5 A TIME OF TRANSITION
- 6 COVID-19 PUTS GLOBAL FOOD
SUPPLY CHAIN IN THE SPOTLIGHT
- 8 COLD CHAIN DEVELOPMENT
ACROSS THE WORLD
- 10 WORKFORCE INNOVATION AND TRAINING
- 12 CREATING MEMBER CONNECTIONS
- 14 ADVOCATING ON BEHALF OF
THE COLD CHAIN INDUSTRY
- 15 SETTING THE INDUSTRY STANDARD
- 16 LEADERS OF THE COLD CHAIN
- 20 2021 GLOBAL EDUCATION
TRAINING & NETWORKING CALENDAR
- 21 2020 CEBA BUILT BY THE BEST AWARD



GCCA HAS A VITAL ROLE IN PROVIDING
PEOPLE AROUND THE WORLD WITH

**HIGH QUALITY,
SAFE FOODS**

IN TRYING AND PROSPEROUS TIMES.

A MESSAGE FROM GCCA CHAIRMEN



Ron Buford
IARW Chairman



Brian Beazer
WFLO Chairman



Vince Free
CEBA Chairman



Todd Lanter
IRTA Chairman

On behalf of the Global Cold Chain Alliance – we are pleased to present the 2020 GCCA Annual Report on association activities as well as our regulatory accomplishments! GCCA has been active this past year on many issues on your behalf.

WE DO NOT THINK IT IS POSSIBLE TO OVERSTATE WHAT A CHALLENGING, YET INSPIRING YEAR 2020 WAS FOR THE GLOBAL COLD CHAIN INDUSTRY.

In the face of COVID-19, food logistics was tested like never before. Our industry rose to the challenge and our companies' frontline teams – part of the world's essential workforce – are to be commended for their brave and hard work over the past year. From warehouse members to construction members to transportation members to all the associates/suppliers and vendors, the entire industry came together to meet these challenging times head on.

GCCA launched its new strategic plan in 2020. At the time we had no idea how fast and deep the association would have to dive into the four core areas of the plan to support member companies and their needs during the pandemic.

GCCA SPENT THE BETTER PART OF THE YEAR OFFERING VALUABLE RESOURCES AND EDUCATION VIRTUALLY TO THE GLOBAL MEMBERSHIP – FROM THE COVID RAPID RESPONSE GUIDE TO SHARE GROUPS TO WEEKLY WEBINARS TO ESSENTIAL WORKER CREDENTIALS.

Difficult decisions were made to pivot from face-to-face events to online programming. The GCCA Policy Forum, European Cold Chain Conference and Brazil Symposium were held virtual as standalone events. However, events like the IARW-WFLO Convention, GCCA Cold Chain Conference & Expo, the CEBA Conference & Expo and the GCCA Latin America Cold Chain Congress were all reimaged into the GCCA Virtual Innovation Program, held over five weeks in October and November.

As we look to 2021, we will continue to see the impacts of COVID-19 but also, we believe, continued growth and opportunities for vital industry growth. We are honored to be serving as your chairmen during this unique period in our history and thank our fellow board members, the GCCA staff and of course all our members worldwide for your support and commitment to both the association and the industry.



WE ARE THE COLD CHAIN



GCCA represents all major sectors of the cold chain including warehousing/ logistics, controlled environment construction, transportation and international development. **GCCA MEMBERS ARE EXPERTS AND LEADERS IN THE TEMPERATURE-CONTROLLED PERISHABLE PRODUCTS INDUSTRY** and are committed to forging a universally strong cold chain where every product retains quality and safety through each link of the chain. GCCA is headquartered in Arlington, Virginia.



GCCA CORE PARTNERS

WAREHOUSING & LOGISTICS

The warehousing arm of GCCA focuses on promoting excellence in global temperature-controlled warehouse and logistics through research, industry benchmarking, networking, and education.

TRANSPORTATION

GCCA's transportation division fosters good commercial and trade relations between transportation companies, their suppliers, and customers; gathers and disseminates data and information to members; and protects the interests of its members from unlawful and unjust measures and practices.

CONSTRUCTION

The construction sector of GCCA provides a forum for innovative ideas, promotes standards of practice, and sponsors professional education programs for the cold storage construction industry.



GLOBAL DEVELOPMENT PROJECTS

GCCA's global development work, conducted through the World Food Logistics Organization (WFLO), delivers education and research to the industry and empowers economic development by strengthening the cold chain globally.





1300+
COMPANIES
WORLDWIDE



85
COUNTRIES



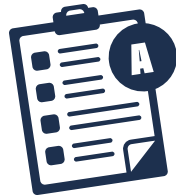
40%+
MEMBERS FROM
OUTSIDE NORTH
AMERICA

INTERNATIONAL OFFICES

AFRICA, BRAZIL, CENTRAL AMERICA,
EUROPE, INDIA AND LATIN AMERICA.



90%
BELIEVE THEIR
COMPANIES
WILL BE MORE
SUCCESSFUL
IN THE NEXT
5 YEARS



77%
OF FOOD
COMPANIES
RECOGNIZE THE
IMPORTANT
ROLE THEIR
COLD CHAIN
PROVIDER
PLANS IN THEIR
COMPANY'S
FOOD SAFETY



93%
BELIEVE THE
INDUSTRY WILL
GROW IN THE
NEXT 5 YEARS





GLOBAL COLD CHAIN BY THE NUMBERS



99%

OF AMERICAN HOUSEHOLDS HAVE FROZEN FOODS**



719M*

TOTAL CAPACITY OF REFRIGERATED WAREHOUSES globally in 2020.
*in cubic meters



16.7%

GREATER CAPACITY in 2020 versus reported numbers in 2018.



51

PARTICIPATING COUNTRIES
TOP 3 COUNTRIES IN TERM OF CAPACITY:
United States
India
China

**GCCA Membership and Market Intelligence Data 2019
**2019 NFRA State of the Industry Report*



GCCA ENSURES FOOD SAFETY, SECURITY & RELIABLE ACCESS TO OVER

213 BILLION

POUNDS, AN EQUIVALENT TO 122M+ PALLETS OF PERISHABLE FOOD ANNUALLY*

The International Warehouse & Logistics Association (IWLA) is created

1891

Temperature controlled warehouse members of IWLA split off and form the National Association of Refrigerated Warehouses (NARW)

1941

Richard (Dick) Powell named President & CEO of NARW

1957

NARW changes name to International Association of Refrigerated Warehouses (IARW)

1972

International Association of Cold Storage Construction (IACSC) created, (Now called the Controlled Environment Building Association (CEBA))

1978



A TIME OF TRANSITION



One year ago, my predecessor, Corey Rosenbusch, bid farewell to GCCA and the association was in the throgs of releasing the results of the global cold chain industry impact research that had recently concluded. Results indicated stakeholders were optimistic about the future, but also recognized that more needed to be

done to ensure sustainable growth. Industry professionals believed they could have an even greater impact by communicating the importance and value of the cold chain.

Aligning all cold chain stakeholders – third-party logistics providers (3PLs), food companies, retailers, suppliers and transportation companies – was key to realizing that goal and advancing the industry. And then came COVID-19.

Overnight, the cold chain industry became the lead story as the public was reassured the food supply chain was secure. GCCA promoted the essential role member companies and their workforce play in keeping that supply chain running.

Throughout 2020, GCCA was proud to stand with our members, providing COVID-19-related support and resources and remaining laser-focused on your needs through our

strategic plan. Qualitative data on the impact and challenges of the pandemic on the cold chain industry that we captured from all types of members confirms the four drivers of the 2020-2022 strategic plan – workforce innovation, global advocacy, market intelligence and research and industry promotion – remain highly essential.

Throughout 2021, GCCA will continue to play a pivotal role in improving alignment to optimize opportunity and remove barriers to growth, and drive value across the cold chain industry. We will be looking at ways that we can improve the value proposition from a global perspective, seeking to add to our list of partnerships and member companies worldwide with a goal of improving international connectivity.

We will also continue our work on developing a world-class industry relations and member engagement plan that enhances the profile and tells the story of the vital work of GCCA's member companies.

Ultimately, we want to ensure we have programs, services and advocacy efforts that help rise up the industry, and our member companies, and provide a tangible return on your membership investment.

Matthew R. Ott, M.S., CAE, CMP
President & CEO • Global Cold Chain Alliance

J William (Bill) Hudson named as President & CEO of IARW

1983

The International Refrigerated Transportation Association (IRTA) was formed

1994

IARW, WFLO, IRTA and CEBA all unite under the Global Cold Chain Alliance umbrella

2007

Corey Rosenbusch takes over as GCCA President & CEO

2013

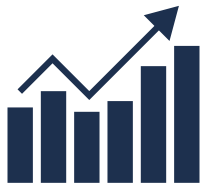
Matthew Ott named GCCA President & CEO

2020



COVID-19 PUTS GLOBAL FOOD SUPPLY CHAIN IN THE SPOTLIGHT

As COVID-19 created disruptions in the food industry, the world looked to GCCA and its members to confirm that the cold chain was strong, food supplies were plentiful and distribution channels were resilient. GCCA members stepped up to the challenge, ensuring that consumers continued to have reliable access to safe, high quality food throughout the pandemic.



67%

BELIEVE MARKET CONDITIONS FOR COLD CHAIN ARE BETTER TODAY THAN 5 YEARS AGO



64%

BELIEVE THEIR CUSTOMERS UNDERSTAND THE IMPORTANT ROLE COLD CHAIN PLAYS IN FOOD SAFETY



BUSINESS IMPACTS OF COVID-19 ON THE GLOBAL COLD CHAIN

170 responses from over 31 countries.

How do you believe the pandemic will change your company's operations in the future relative to pre-COVID operations?



53%

OF COMPANIES HAD AN INCREASE OF EMPLOYEES WORKING FROM HOME



72%

OF COMPANIES DEVELOPED A MORE ROBUST EMERGENCY PLAN



27%

OF COMPANIES HAD AN INCREASE OF VALUE ADDED SERVICES PROVIDED TO CUSTOMERS



75%

OF COMPANIES IMPLEMENTED STRICT PROTOCOLS FOR DRIVER CHECK-IN



41%

OF COMPANIES INCREASED INVESTMENT IN AUTOMATION



33%

OF COMPANIES DIVERSIFYING THEIR CUSTOMER BASE



The cornerstones of GCCA's COVID-19 Webportal are a **Rapid Response Guide** and **Recovery Guide** as well as the hundreds of whitepapers, check lists, guides and other resources designed to help cold chain industry companies navigate the challenges of the pandemic.



75+

VIRTUAL SHARE GROUPS focused on Operations, HR, C-Suite Executives, Safety, Transportation, and Construction.



1000+

PARTICIPANTS WORLDWIDE in 20 Covid-19 Webinars



150,000+

FREE FACE MASKS provided by FEMA to our U.S. members



COLD CHAIN DEVELOPMENT ACROSS THE WORLD

Many countries around the world face challenges in securing access to safe and reliable food due to lack of understanding, knowledge and investment in cold chain best practices and infrastructure. Through the **World Food Logistics Organization (WFLO)**, the foundation arm of **GCCA**, important project work is being done to develop a strong international cold chain through partnerships with donors, NGOs, governments, educational institutions, local associations, and private sector businesses. These projects focus on the proper handling and storage of perishable products and the development of systems and best practices for the safe, efficient, and reliable movement of food to the people of the world.

2020 PROJECTS

16 COUNTRIES SERVED

Bangladesh, Benin, Cambodia, Egypt, Ethiopia,
India, Kazakhstan, Kyrgyzstan, Philippines,
Republic Of Georgia, Tajikistan, Thailand,
Turkmenistan, Uzbekistan, Vietnam



SINCE 2002, THE WFLO
HAS COMPLETED



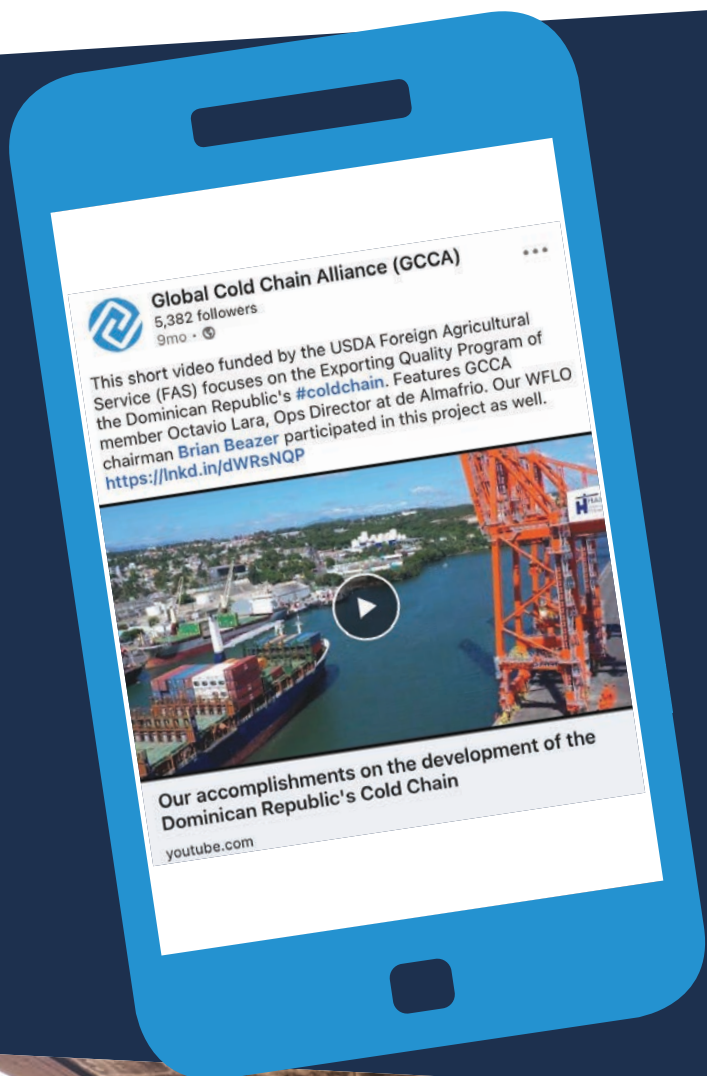
111+

PROJECTS IN



67+

COUNTRIES



PROJECT PARTNERS

- ARCH
- Asian Development Bank
- Central Asia Transport and Logistics Partnership
- Infunde
- International Finance Corporation
- LixCap
- United States Department of Agriculture (USDA)
- United States Agency for International Development (USAID)
- World Bank

MEMBER ENGAGEMENT IN COLD CHAIN DEVELOPMENT ACROSS THE WORLD

Manuel Cabrera-Kabana (IARW Vice Chairman), Friopuerto Investment
Wes Jayne, Halls Logistics
Michael Jahncke, Chairman, GCCA Scientific Advisory Council
Daniel Kaplan (WFLO Vice Chairman), Polaris Cold Storage & Rack Builders Inc.
Brian Beazer (WFLO Chairman) WCS Logistics/Winchester Cold
Peter Blokland, BYAZ
Harshal Surange, ACR Project Consultants
Dr. Elhadi Yahia, Universidad Autónoma de Querétaro,
James Eason, GCCA Technical Advisor
Dick Dowdell, Consultant



WORKFORCE INNOVATION AND TRAINING

The WFLO Institute is a four-day industry-specific program for professionals engaged in temperature-controlled logistics, offering more than 40 classes taught by leading experts in the industry. **The curriculum takes students through cold chain management, customer service, employee safety, food safety, warehouse operations, transportation operations, and professional development.**



**WOMEN PARTICIPATING
IN THE WFLO INSTITUTE
CONTINUES TO GROW
YEAR OVER YEAR
SHOWCASING
THE ONGOING
DIVERSIFICATION
OF THE COLD CHAIN
WORKFORCE**

WFLO INSTITUTE WEST Tempe, AZ • January 12 - 15, 2020



230

STUDENTS



53

YEAR 3
GRADUATES

WFLO INSTITUTE EAST Atlanta, GA • February 9 - 12, 2020



215

STUDENTS



51

YEAR 3
GRADUATES

WFLO INSTITUTE LATIN AMERICA Virtual • October 5 - 7, 2020



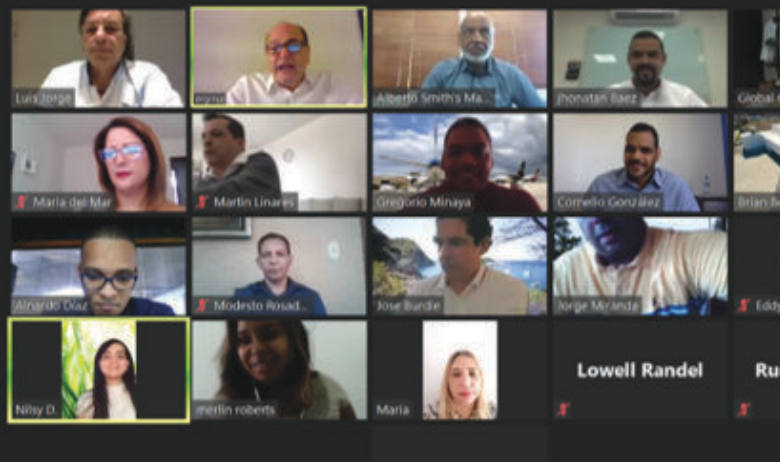
38

STUDENTS

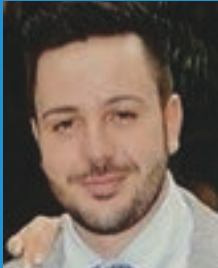


13

YEAR 3
GRADUATES



GCCA NEXTGEN AWARD



Luca Quaresima

Europe Logistic and Operations Manager of NewCold Advanced Cold Logistics, as the recipient of the 2020 GCCA European Cold Chain Future Leader Award and named the 2020 GCCA Global NextGen Award Recipient.

"I am immensely proud to be recognized as a future leader in an industry that plays such a critical role in the movement of perishable products worldwide," said Quaresima. "It was an honor to take part in the award competition and I enjoyed the experience very much."



Zeshan Hassan

Continuous Improvement Manager with Congebec was awarded the 2020 GCCA Don Schilmme Cold Chain Future Leader Award

"I was born in a very small town in Pakistan and moved to different cities to pursue my education," stated Hassan. "Receiving this award is the result of hard work that I hope inspires others to find ways to find success."



CREATING MEMBER CONNECTIONS

GCCA VIRTUAL INNOVATION PROGRAM (VIP)

VIP was a combination of several GCCA events - IARW-WFLO Convention, GCCA Cold Chain Conference & Expo, CEBA Conference & Expo and GCCA Latin America Cold Chain Congress. Held virtually, it allowed GCCA to continue providing quality education and networking in lieu of face to face events.



660

COLD CHAIN PROFESSIONALS



20

COUNTRIES



50

EDUCATIONAL SESSIONS



5

ROUNDTABLE DISCUSSIONS



40

COMPANIES HOSTED B2B MEETING SUITES



7

EDUCATIONAL TRACKS
Owner/C-Suite, Facility Operations, Facility Engineering, Supply Chain/Transportation, Vendor/3PL



GCCA COLD CHAIN CONNECTIONS

28

PARTICIPANTS

3

CITIES

Dallas, Atlanta, Washington DC





**GCCA VIRTUAL EUROPEAN
COLD CHAIN CONFERENCE**

**140 DELEGATES
13 COUNTRIES**

EDUCATIONAL TOPICS:
Economic Trends, Warehouse Operations,
Health & Safety, Transportation



**GCCA BRAZIL/ABIAF
VIRTUAL SYMPOSIUM**

149 REGISTERED

EDUCATIONAL TOPICS:
Warehouse Best Practices, Global Cold
Chain Trends and Market Intelligence

**SOUTH AFRICA PANEL DISCUSSION
ON INSURANCE CHALLENGES**

170 REGISTERED

EDUCATIONAL TOPICS:
Global Re-Insurance Market's Impact on South
Africa, How Insurers Look at Refrigerated
Warehouses, Insulated Panel Types &
Performance, Risk Management



ADVOCATING ON BEHALF OF THE COLD CHAIN INDUSTRY



GCCA ACHIEVES OSHA ALLIANCE AMBASSADOR RECOGNITION

On August 3, 2020, OSHA and GCCA signed an agreement designating GCCA as an **OSHA Alliance Ambassador**. Ambassador designation from OSHA recognizes the industry's dedication to safety and will enable GCCA to work even more closely with the agency to develop compliance assistance tools and resources, share information with workers and employers, and further our efforts to train OSHA inspectors regarding the cold chain industry.



GCCA SECURES APPROVAL OF NEW OPERATING ENGINEERS POLICY IN ONTARIO, CANADA

In October 2020, the **Ontario Minister of Government and Consumer Services** officially approved the new regulations for Operating Engineers. The minister's action marks the successful completion of efforts initiated by GCCA and Canadian members to modernize the regulation and gives facilities more options for meeting compliance and safety requirements.



GCCA URGES FSIS TO MAKE IMPORTANT IMPROVEMENTS TO MEAT AND POULTRY EXPORT PROCESS

GCCA led a coalition of industry members in successfully getting the **United States Department of Agriculture's Food Safety and Inspection Service (FSIS)** to improve the process for meat and poultry exports.



GCCA VIRTUAL COLD CHAIN POLICY FORUM

200 registrants (doubled from 2019). Participants engaged with U.S. regulatory agencies including USDA, OSHA, FDA, and EPA on key policy issues impacting the cold chain industry.



SETTING THE INDUSTRY STANDARD

GCCA ENERGY EXCELLENCE CERTIFICATION PROGRAM

The GCCA Energy Excellence Recognition Program helps temperature-controlled warehouse operators measure and improve energy efficiency at each of their facilities.

PARTICIPATING MEMBERS

- Americold Logistics
- Congebec Logistics
- Hanson Logistics
- Merchandise Warehouse
- MTC Logistics
- Lineage Logistics
- Superfrio Armazéns Gerais

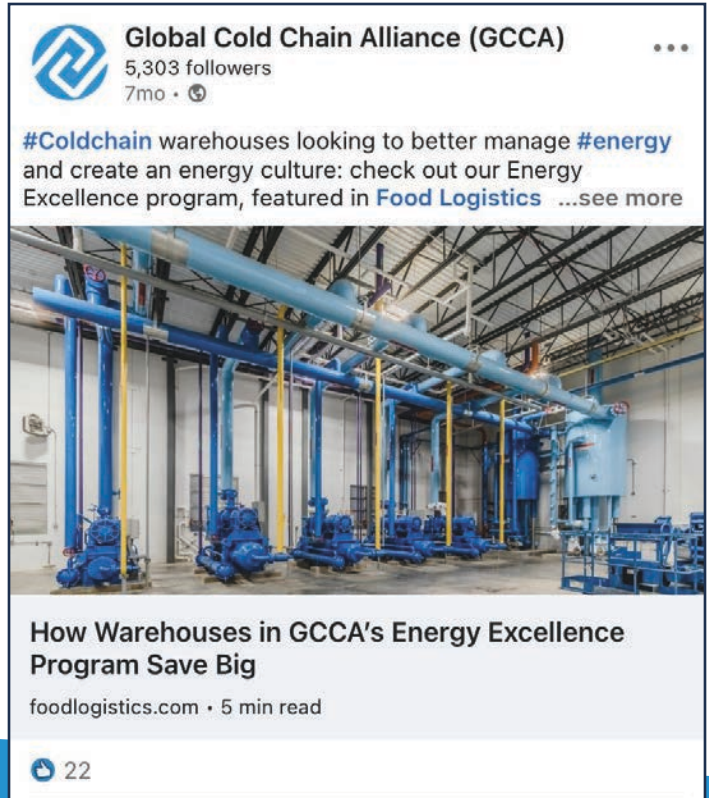


GCCA CERTIFIED COLD CARRIER PROGRAM

The global Certified Cold Carrier™ program provides independent, third-party assurance that your asset-based carrier company is aligned with industry prescribed best practices for the safe and sanitary transport of food perishables. These best practices are published in GCCA's Refrigerated Transportation Best Practices Guide and are based on the Sanitary Transportation of Human and Animal Food (STF) rule of the U.S. Food Safety Modernization Act (FSMA).

PARTICIPATING MEMBERS

- Charger Logistics
- Congebec
- Daytona Freight Systems
- FFE Transportation Services
- GFA Rail Services, Inc.
- Great Plains Transport
- JB Hunt
- KeHE
- Midwest Refrigerated Services
- Penske Logistics
- Sethmar Transportation
- Trailiner
- WEL Companies





LEADERS OF THE COLD CHAIN

IARW BOARD OF DIRECTORS

CHAIRMAN

Ron Buford, Premier Refrigerated Warehouse

VICE CHAIRMAN

Manuel C. Kabana, Friopuerto Investment

TREASURER

Anthony M. Leo, RLS Logistics

IMMEDIATE PAST CHAIRMAN

Andrew B. Janson, MTC Logistics

MEMBERS

Scott Albers, Nor-Am Cold Storage

Larry Alderfer, United States Cold Storage

Mauricio Barrera, Qualianz

Fred Boehler, Americold Logistics

Rich Burke, KPAC Cold Storage

Jason Dreisbach, Dreisbach Enterprises

Andrew P. Fisk, Lone Star Cold Storage

Harry Halpert, MTC Logistics

Tim Ludwig, Bradner Cold Storage

Mike McClendon, Lineage Logistics

Piet Meijs, NewCold

Francisco Moura, Superfrio Logística Frigorificada

Karen Reece, Eskimo Cold Storage

Neal Rider, Lineage Logistics

Carlos Rodriguez, AGRO Merchants Group

Tim Siddiq, Merchandise Warehouse

WFLO BOARD OF GOVERNORS

CHAIRMAN

Brian Beazer, WCS Logistics

VICE CHAIRMAN

Daniel Kaplan, Polaris Cold Storage & Rack Builders Inc.

TREASURER

Greg Laurin, Conestoga Cold Storage

IMMEDIATE PAST CHAIRMAN

Donald Dick, Dick Cold Storage (posthumously)

MEMBERS

Justin Chan, Vanke Cold Chain Logistics

Adam Forste, Lineage Logistics

Mickey Hoffmann, United States Cold Storage

Brian Kyle, Burris Logistics

Niels Lundgaard-Svenstrup, Coldstar

Dave Moore, Agro Merchants Group

John P. Naylor, Lineage Logistics

Tom Poe, Crystal Distribution Services

Mike Pokel, Midwest Refrigerated Services

Angela Schmidt, Mattingly Cold Storage

David Stuver, Americold Logistics

Jeroen Tempels, Eurofrigo

Steve Tippmann, Interstate Warehousing

Ken Whah, Hanson Logistics

PUBLIC MEMBERS

Arne J. Martinsen, Transmar, Ltd.

Kirk Robertson, Terra Vista Capital

SCIENTIFIC ADVISORY COUNCIL CHAIRMAN

Michael Jahncke, Professor Emeritus, Virginia Tech



LEADERS OF THE COLD CHAIN

CEBA BOARD OF DIRECTORS

CHAIRMAN

Vince Free, Freez Construction

VICE CHAIRMAN

Marko Dzeletovich, Coldbox Builders

TREASURER

Sam Tippmann, Tippmann Innovation

IMMEDIATE PAST CHAIRMAN

Tim Nguyen, ESI Group

MEMBERS

Peter Bartell, RHH Foam Systems Inc.

Eric Brown, ALTA Refrigeration

Dwight Clark, Jamison Door Company

Peter Clayton, CEBA European Division

Nick Dakouras, Delta T Construction

Chase Deaton, Rytex High Performance Doors

Curt Edmisten, MTC Logistics

Scott Guimond, Fisher Construction Group

Wade Hudson, Cold Storage Construction Services Inc.

Vince Humphreys, Ahern Fire Protection

Mike Jones, Primus Builders, Inc.

Brian King, A M King Construction Company

Steve Mauro, Kingspan North America

Gary O'Donnell, United Insulated Structures Corp.

Jim Romine, Americold Logistics

Daren Sealover, Graycor Construction Company

Jay Smith, Metl-Span

Jake Stefan, ARCO Design/Build

Charles Woolley, Coldroom Systems, Inc.

Chuck Zimmermann, Entrematic

IRTA BOARD OF DIRECTORS

CHAIRMAN

Todd Lanter, Lineage Logistics

VICE CHAIRMAN

Don Durm, PLM Trailer Leasing

TREASURER

Richard Patenaude, Congebec

IMMEDIATE PAST CHAIRMAN

Robert Fay, Seminole Gulf Railway/Florida Freezer

MEMBERS

Craig Bennett, Utility Trailer Manufacturing Co.

Greg Bryan, Lineage Logistics

Amber Edmondson, Trailiner Corp.

Herman Haksteen, Cryo Tranz

Jim Koeble, Midwest Refrigerated Services,

Matt Luckas, Ralph Moyle Inc.

Travis McCain, FFE Transportation Services

Jeff Miller, Select Carriers

Chris Mnichowski, CTI Freight Systems Inc.

Keith Mowery, United States Cold Storage

Mike Murdock, Carrier Transcold

Eric Olafson, Port of Miami

Barbara J. Pratt, Maersk Line

Ned Runser, Hall's Warehouse Corp.

Brian Webb, JB Hunt

John Williamson, CWH Johnson's International

Brandon Woods, Refrigerated Transport, Inc.



LEADERS OF THE COLD CHAIN

SCIENTIFIC ADVISORY COUNCIL CHAIRMAN AND WFLO SCIENTIFIC ADVISOR

Dr. Michael Jahncke, Virginia Seafood Agricultural Research & Extension Center, *Expertise: Fish Products*

WFLO SCIENTIFIC ADVISORY COUNCIL

Dr. Jeffrey Brecht, University of Florida, *Expertise: Cool-Climate Fruit & Produce*

Dr. Patrick Brecht, PEB Commodities, *Expertise: Refrigerated Transportation*

Dr. Paul Dawson, Clemson University, *Expertise: Poultry Products*

Dr. Donald Fenton, Kansas State University, *Expertise: Refrigeration Engineering*

Dr. Brian Fugate, University of Arkansas, *Expertise: Supply Chain Management*

Dr. Cody Gifford, University of Wyoming, *Expertise: Meat Science*

Dr. Dennis Heldman, The Ohio State University, *Expertise: Food Process Engineering*

Dr. Faris Karim, Kansas State University, *Expertise: Ammonia Contamination and Food Toxicology*

Dr. Barbara Rasco, PhD JD, University of Wyoming, *Expertise: Food Safety, Food Safety Regulations*

Kees Jan Roodbergen, University of Groningen, *Expertise: Logistics and Operations Management*

Dr. Vicky Salin, Texas A&M University, *Expertise: Agriculture Economics*

Dr. Subramaniam Sathivel, Louisiana State University, *Expertise: Frozen Food Quality*

Dr. S. Paul Singh, Michigan State University, *Expertise: Packaging, Package Labeling*

Dr. Donald Schaffner, Rutgers, The State University of New Jersey, *Expertise: Microbiology*

Dr. Charles White, Mississippi State University, *Expertise: Dairy Products*

Dr. Elhadi Yahia, Universidad Autónoma de Querétaro, *Expertise: Postharvest Technology of Perishable Foods*





LEADERS OF THE COLD CHAIN

SAC EMERITUS

Dr. R. L. (Bob) Henrickson, Oklahoma State University,
Expertise: Meat Products

Dr. Daryl B. Lund, University of Wisconsin,
Expertise: Food Science

Dr. Joseph Sebranek, Iowa State University,
Expertise: Meat Products

Joseph Slavin, Jos. Slavin & Associates,
Expertise: Fish Products

Dr. W. F. (Will) Stoecker, University of Illinois,
Expertise: Refrigeration Engineering

GCCA STAFF

EXECUTIVE OFFICE

Matthew Ott, CAE, CMP, President & CEO

Rita Haley, Director of Administration &
Manager of GCCA Boards

GOVERNMENT AND LEGAL AFFAIRS

Lowell Randel, Senior Vice President of
Government and Legal Affairs

Jordan Bonfitto, Director of Government

MARKETING, COMMUNICATIONS, PUBLIC RELATIONS AND INDUSTRY AFFAIRS

Meghan Rodgers, Vice President of Public Relations
and Industry Affairs

Rachael Oury, Senior Manager of Industry Promotion

MEMBER PROGRAMS AND SERVICES

Brian Lynch, Senior Vice President, Business
Development and Member Programs

James Rogers, CAE, Senior Director of Business
Development

Shane Jacques, Director of Training and Talent
Development

Erin Grady, Manager of Education and Knowledge
Management

Jeff Greenwald, Manager of Credentialing Programs

Katie Sastre, Programs Coordinator

MEMBERSHIP, FINANCE AND INTERNATIONAL PROGRAMS + PROJECTS

Megan Costello, Executive Vice President &
Chief of Staff

Alice McKinnon, Director of Membership &
International Programs

Debbie Corado, Director of GCCA Latin America

Julie Hanson, Director of GCCA Europe

Isabela Perazza, Director of GCCA Brasil

Tatiana Nascimento, Supervisor of Member Services,
GCCA Brasil

Lizelle van der Berg, Director of GCCA South Africa

Amanda Brondy, Senior Director of International
Projects

Madison Jaco, Coordinator of International Projects

Millicent Johnson, Office Administrator



2021 GLOBAL EDUCATION, TRAINING & NETWORKING CALENDAR

57TH WFLO INSTITUTE WEST

8-11 SEPTEMBER 2021

Tempe, Arizona, United States | Tempe Mission Palms Hotel
at Arizona State University

57TH WFLO INSTITUTE EAST

26-29 SEPTEMBER 2021

Atlanta, Georgia, United States |
Georgia Tech Hotel & Conference Center

GCCA EUROPEAN COLD CHAIN CONFERENCE & EXPO

2-4 JUNE 2021 | Rotterdam, the Netherlands

WFLO INSTITUTE LATIN AMERICA

14-16 JULY 2021 | Mexico City, Mexico

GCCA COLD CHAIN POLICY FORUM

26-28 JULY 2021 | Washington, D.C., United States

130TH IARW-WFLO CONVENTION

8-10 OCTOBER 2021 | Austin, Texas, United States

WFLO INSTITUTE AUSTRALIA

TBD OCTOBER 2021 | Melbourne, Australia

GCCA BRAZIL SYMPOSIUM

TBD OCTOBER 2021 | Sao Paulo, Brazil

41ST CEBA CONFERENCE & EXPO

2-4 NOVEMBER 2021 | Las Vegas, Nevada, United States

GCCA LATIN AMERICA COLD CHAIN CONGRESS

TBD NOVEMBER 2021 | Mexico City, Mexico



DON DICK IN MEMORIAM

It was with great sorrow that the Global Cold Chain Alliance (GCCA) and the World Food Logistics Organization (WFLO) announced in early 2020 the passing of Don Dick, 2019 – 2020 Chairman of the WFLO and CEO of Dick Cold Storage. He was passionate about the industry and was a mentor to many. Don passed away February 29th, after a short illness.





2020 CEBA BUILT BY THE BEST AWARD



Controlled Environment Building Association

PRIMUS BUILDERS RECIPIENT OF THE 2020 CEBA BUILT BY THE BEST AWARD FOR AMERICOLD EXPORT FACILITY

The CEBA Built by the Best Award is given each year to a member companies whose project shows a commitment to industry-changing innovations, exceeding customer expectations, positively impacting the cold chain, and contributing to society at large through food safety, trade development, job creation, and more.

BUILT IN PARTNERSHIP WITH 14 CEBA MEMBERS:

- ALTA Refrigeration
- Dow Building Solutions
- Fastener Systems
- The Fricks Company
- Global Insulated Doors
- Green Span Profiles
- Group4 Reps (Gulf Eagle Supply)
- Johns Manville
- Lewis Electrical Contractors
- Metl-Fab
- Metl-Span
- RHH Foam Systems
- Rytec High Performance Doors
- Shadco Column Bearing Blocks



51

FEET HIGH



312,000

SQ. FT. FOOTPRINT



-20°

QFR QUICK FREEZE SYSTEM

with Convertible freezer spaces to store product between -10° to 35°





241 18th Street South, Suite 620, Arlington, Virginia, 22202
Phone: 703 373 4300 | email@gcca.org | www.gcca.org

FOLLOW US ON SOCIAL

 [@globalcoldchainalliance](https://www.facebook.com/globalcoldchainalliance)  [@gccaorg](https://twitter.com/gccaorg)

 [Global Cold Chain Alliance \(GCCA\)](https://www.linkedin.com/company/global-cold-chain-alliance)  community.gcca.org/home